

# MELSTEEL

**PTY LTD**

**ABN: 13 006 287 038**

## Steel Price List - February 2016



### **Sales and Distribution Division:**

Address: 132 - 134 Abbott Road  
Hallam, VIC 3803

Phone: 9796 3090

Fax: 9796 3588

Email: [buysteel@melsteel.com.au](mailto:buysteel@melsteel.com.au)

Website: [www.melsteel.com.au](http://www.melsteel.com.au)

Postal Address: P.O. Box 63  
Hallam, VIC 3803



## Table of Contents

Rydal Round Edge Flats	1
Square Edge Flats AS3679/300	1
Flat - Duragal	2
Convex Square Edge Flat	2
Round Bar - Semi-Bright	2
Round Bar - Black	2
Square Bar - Black AS3679/300	2
Square Billets AS1442-1022	2
Light Angles AS3679/300	3
Light Structural Angle AS3679/300	3
Heavy Structural Angle AS3679/300	3
Duragal Angles C350LO TS100	3
Lintel - Galvanised	4
Light Channel AS3679/300	4
Heavy Channel AS3679/300	4
Channel - Duragal	4
Universal Column AS3679/300	4
Taper Flange Beam	4
Universal Beam AS3679/300	5
Plate	5
Floor Plate AS3679/250	6
Sheet - Coldrolled	6
Sheet - Galvabond	6
Sheet - Blackform	7
Sheet - Pickled and Oiled	7
Sheet - Zincalume	7
Sheet - Zincanneal	7
Sheet - Zincseal	7
Sheet - Colourbond	7
SHS - Square Tubeline AS1163 C350LO	8
RHS - Rectangular AS1163 C350LO	9
SHS - Allgal and Supagal Square	9
RHS - Allgal and Supagal Rectangular	10
Post Cap - Square	10
Extra Light Pipe - Black AS1163 C350LO	10
Light Pipe - Black AS1163 C350LO	10
Medium Pipe - Black AS1163 C250LO	10
Heavy Pipe - Black AS1163 C250LO	10
Extra Heavy Pipe - Black AS1163 C250LO	11
Light Pipe - Galvanised AS1163 C350LO	11
Medium Pipe - Galvanised AS1163 C250LO	11
Heavy Pipe - Galvanised AS1163 C250LO	11
Medium Screwed Both Ends Pipe - Galvanised AS1163 C250LO	11
Heavy Screwed Both Ends Pipe - Galvanised AS1163 C250LO	11
Post Cap - Round	11
Long Radius Elbow	12
Short Radius Elbow	12
Screw-On Socket - Black	12
Buttweld Tee	12
Round ERW - Semi-Bright	12
Square ERW - Semi-Bright	12
Rectangular ERW - Semi-Bright	13
Round ERW - Galvabond	13
Square ERW - Galvabond	13
Rectangular ERW - Galvabond	13
Oval Tube - ERW	13
Flat Sided Oval - ERW	13

<b>CS1020 Round Bright Bar (metric)</b>	13
<b>CS1020 Round Bright Bar (imperial)</b>	13
<b>S1214 Round Bright Bar (metric)</b>	14
<b>S1214 Round Bright Bar (Imperial)</b>	14
<b>K1040 Round Bright Bar (metric)</b>	14
<b>K1040 Round Bright Bar (imperial)</b>	14
<b>Square Reinforcing Mesh</b>	14
<b>Rectangular Reinforcing Mesh</b>	14
<b>Bar Trench Mesh</b>	14
<b>Plastic Bar Chairs</b>	14
<b>Deformed Bar</b>	14
<b>Polythene Film, Fortecon</b>	15
<b>Loop Tie Wires</b>	15
<b>Rolltop Ridge - Colour</b>	15
<b>Rolltop Ridge - Zinc</b>	15
<b>Downpipe - Coloured</b>	15
<b>Downpipe - Zinc</b>	15
<b>PVC Tape</b>	15
<b>Monoclad - Colourbond</b>	15
<b>Monoclad - Zinc</b>	15
<b>Quad Gutter</b>	15
<b>Purlins - Zincform</b>	15
<b>Hollow Bar</b>	16
<b>Graduate 120 (Domestic)</b>	16
<b>Director 200 (Light Industrial)</b>	16
<b>Matador 450 (Medium Industrial)</b>	16
<b>Hercules 650 (Heavy Industrial)</b>	16
<b>Common to Matador 450 and Hercules 650</b>	16
<b>Grinding Discs</b>	17
<b>Cutting Discs</b>	17
<b>Paints</b>	17
<b>Ball Bearing Hinge</b>	17
<b>Door Frame</b>	17
<b>Double Door Frame</b>	17
<b>Allthread - Zinc</b>	17
<b>Polycarbonate Corrugated</b>	18
<b>Accessory Products</b>	18
<b>Expamet Steel Gridwalk (WK) - Black</b>	19
<b>Expamet Steel Gridwalk (WK) - Galvanised</b>	19
<b>Expamet Steel Gridwalk - Black</b>	19
<b>Expamet Steel Gridwalk - Galvanised</b>	19
<b>Large Steel Mesh - Mill</b>	19/20
<b>Large Steel Mesh - Galvanised</b>	20
<b>Raised Small Steel Mesh - Black</b>	20
<b>Flat Small Steel Mesh - Black</b>	20
<b>Super Mesh (One-Way Restricted Mesh)</b>	21
<b>Balustrading and Security Screening</b>	21
<b>Sunscreen</b>	21
<b>Gripspan Grating - Diamond Tread - Plain (PI) - Serrated (SR)</b>	21

Rydal Round Edge Flats							
Product Code	Size	Length (M)	\$/M	Product Code	Size	Length (M)	\$/M
F01003	10 x 3	4 *	\$ 0.80	F01603	16 x 3	4	\$ 1.10
F01303	13 x 3	4 *	\$ 0.90	F01605	16 x 5	4	\$ 2.05
F01305	13 x 5	4 *	\$ 1.50	F01606	16 x 6	4	\$ 2.45
F01306	13 x 6	4	\$ 1.75				

Square Edge Flats AS3679/300							
Product Code	Size	Length (M)	\$/M	Product Code	Size	Length (M)	\$/M
F01608	16 x 8	6	\$ 1.35	F07525	75 x 25	6 *	\$ 20.60
F02003	20 x 3	6 *	\$ 0.70	F07540	75 x 40	6 *	\$ 39.30
F02005	20 x 5	6 *	\$ 1.00	F09006	90 x 6	6 *	\$ 5.35
F02006	20 x 6	6 *	\$ 3.05	F09008	90 x 8	6 *	\$ 7.10
F02010	20 x 10	6 *	\$ 2.05	F09010	90 x 10	6 *	\$ 8.60
F02503	25 x 3	6 *	\$ 0.90	F09012	90 x 12	6 *	\$ 10.50
F02505	25 x 5	6 *	\$ 1.25	F09016	90 x 16	6 *	\$ 16.60
F02506	25 x 6	6 *	\$ 1.55	F10003	100 x 3	6 *	\$ 7.25
F02508	25 x 8	6 *	\$ 2.30	F10005-l	100 x 5	6 *	\$ 4.80
F02510	25 x 10	6 *	\$ 2.45	F10006	100 x 6	6 *	\$ 6.00
F02512	25 x 12	6 *	\$ 3.05	F10008	100 x 8	6 *	\$ 7.80
F03203	32 x 3	6 *	\$ 1.05	F10010	100 x 10	6 *	\$ 9.80
F03205	32 x 5	6 *	\$ 1.60	F10012	100 x 12	6 *	\$ 11.50
F03206	32 x 6	6 *	\$ 1.95	F10016	100 x 16	6 *	\$ 15.60
F03208	32 x 8	6 *	\$ 2.55	F10020	100 x 20	6 *	\$ 19.25
F03210	32 x 10	6 *	\$ 3.15	F10025	100 x 25	6 *	\$ 24.30
F03212	32 x 12	6 *	\$ 4.45	F11006	110 x 6	6 *	\$ 6.95
F04003	40 x 3	6 *	\$ 1.60	F11008	110 x 8	6 *	\$ 8.65
F04005	40 x 5	6 *	\$ 2.00	F11010	110 x 10	6 *	\$ 10.60
F04006	40 x 6	6 *	\$ 2.35	F11012	110 x 12	6 *	\$ 16.30
F04008	40 x 8	6 *	\$ 3.15	F13005	130 x 5	6 *	\$ 6.40
F04010	40 x 10	6 *	\$ 4.05	F13006	130 x 6	6 *	\$ 7.65
F04012	40 x 12	6 *	\$ 5.05	F13008	130 x 8	6 *	\$ 10.20
F04016	40 x 16	6 *	\$ 6.60	F13010	130 x 10	6 *	\$ 13.65
F04020	40 x 20	6 *	\$ 10.15	F13012	130 x 12	6 *	\$ 14.95
F05003	50 x 3	6 *	\$ 1.70	F13016	130 x 16	6 *	\$ 19.90
F05005	50 x 5	6 *	\$ 2.50	F13020	130 x 20	6 *	\$ 25.55
F05006	50 x 6	6 *	\$ 3.05	F13025	130 x 25	6 *	\$ 39.45
F05008	50 x 8	6 *	\$ 3.95	F15003	150 x 3	6 *	\$ 5.90
F05010	50 x 10	6 *	\$ 4.95	F15005	150 x 5	6 *	\$ 7.45
F05012	50 x 12	6 *	\$ 5.90	F15006	150 x 6	6 *	\$ 9.10
F05016	50 x 16	6 *	\$ 7.80	F15008	150 x 8	6 *	\$ 12.30
F05020	50 x 20	6 *	\$ 9.85	F15010	150 x 10	6 *	\$ 14.55
F05025	50 x 25	6 *	\$ 12.12	F15012	150 x 12	6 *	\$ 17.85
F06503	65 x 3	3	\$ 2.80	F15016	150 x 16	6 *	\$ 23.45
F06505	65 x 5	6 *	\$ 3.20	F15020	150 x 20	6 *	\$ 29.50
F06506	65 x 6	6 *	\$ 3.80	F15025	150 x 25	6 *	\$ 42.15
F06508	65 x 8	6 *	\$ 5.05	F15050	150 x 50	6	\$ 156.55
F06510	65 x 10	6 *	\$ 6.35	F18006	180 x 6	6	\$ 11.70
F06512	65 x 12	6 *	\$ 7.50	F18010	180 x 10	6 *	\$ 18.25
F06516	65 x 16	6 *	\$ 10.15	F18012	180 x 12	6 *	\$ 21.85
F06520	65 x 20	6 *	\$ 16.55	F18020	180 x 20	6	\$ 39.60
F06525	65 x 25	6 *	\$ 18.65	F20006	200 x 6	6 *	\$ 11.80
F07503	75 x 3	3	\$ 3.80	F20008	200 x 8	6 *	\$ 15.75
F07505	75 x 5	6 *	\$ 3.65	F20010	200 x 10	6 *	\$ 19.50
F07506	75 x 6	6 *	\$ 4.30	F20012	200 x 12	6 *	\$ 23.05
F07508	75 x 8	6 *	\$ 5.80	F20016	200 x 16	6 *	\$ 31.75
F07510	75 x 10	6 *	\$ 7.35	F20020	200 x 20	6 *	\$ 38.50
F07512	75 x 12	6 *	\$ 8.75	F20025	200 x 25	6 *	\$ 48.95
F07516	75 x 16	6 *	\$ 12.05	F25006	250 x 6	6 *	\$ 14.75

F07520	75 x 20	6 *	\$ 14.50
Product Code	Size	Length (M)	\$/M
F25010	250 x 10	6 *	\$ 24.60
F25012	250 x 12	6 *	\$ 30.50
F25016	250 x 16	6 *	\$ 42.60
F25020	250 x 20	6 *	\$ 53.60
F25025	250 x 25	6 *	\$ 61.45

F25008	250 x 8	6	\$ 20.70
Product Code	Size	Length (M)	\$/M
F30006	300 x 6	6 *	\$ 21.65
F30008	300 x 8	6	\$ 28.90
F30010	300 x 10	6 *	\$ 30.30
F30012	300 x 12	6 *	\$ 35.40
F30016	300 x 16	6 *	\$ 50.20
F30020	300 x 20	6 *	\$ 58.25
F30025	300 x 25	6 *	\$ 76.55

Flat - Duragal							
Product Code	Size	Length (M)	\$/M	Product Code	Size	Length (M)	\$/M
F05004D	50 x 4	6	\$ 4.80	F10005D	100 x 5	6	\$ 11.70
F05005D	50 x 5	6	\$ 5.30	F10006D	100 x 6	6	\$ 14.10
F06504D	65 x 4	6	\$ 5.30	F13005D	130 x 5	6	\$ 17.05
F06505D	65 x 5	6	\$ 7.05	F15005D	150 x 5	6	\$ 21.10
F07504D	75 x 4	6	\$ 7.15	F15006D	150 x 6	6	\$ 24.35
F07505D	75 x 5	6	\$ 7.95	F15008D	150 x 8	6	\$ 34.65
F10004D	100 x 4	6	\$ 10.95	F20006D	200 x 6	6	\$ 34.90

Convex Square Edge Flat							
Product Code	Size	Length (M)	\$/M	Product Code	Size	Length (M)	\$/M
CON3813	38 x 13	5.8 *	\$ 16.15	CON5013	50 x 13	5.8 *	\$ 22.05

Round Bar - Semi-Bright							
Product Code	Size (mm)	Length (M)	\$/M	Product Code	Size (mm)	Length (M)	\$/M
BR05	5	4	\$ 0.45	BR08	8	4 *	\$ 1.05
BR06.3	6.3	4	\$ 0.65				

Round Bar - Black							
Product Code	Size (mm)	Length (M)	\$/M	Product Code	Size (mm)	Length (M)	\$/M
BR10	10	6 *	\$ 0.80	BR33	33	6	\$ 9.00
BR12	12	6 *	\$ 1.15	BR36	36	6	\$ 10.10
BR14	14	6 *	\$ 1.50	BR39	39	6 *	\$ 11.90
BR16	16	6 *	\$ 2.05	BR45	45	6	\$ 16.95
BR18	18	6	\$ 2.65	BR50	50	6 *	\$ 19.55
BR20	20	6	\$ 3.15	BR60	60	6	\$ 72.30
BR22	22	6	\$ 3.70	BR75	75	6 *	\$ 59.80
BR24	24	6 *	\$ 4.35	BR90	90	6	\$ 70.60
BR27	27	6	\$ 5.70	BR100	100	6 *	\$ 208.00
BR30	30	6 *	\$ 7.30				

Square Bar - Black AS3679/300							
Product Code	Size (mm)	Length (M)	\$/M	Product Code	Size (mm)	Length (M)	\$/M
BS06	6	6	\$ 1.50	BS20	20	6	\$ 4.00
BS08	8	6	\$ 1.30	BS25	25	6 *	\$ 6.35
BS10	10	6 *	\$ 1.20	BS32	32	6 *	\$ 11.80
BS12	12	6 *	\$ 1.45	BS40	40	6 *	\$ 15.90
BS16	16	6 *	\$ 2.75				

Square Billets AS1442-1022							
Product Code	Size (mm)	Length (M)	\$/M	Product Code	Size (mm)	Length (M)	\$/M
BS45	45	6 *	\$ 28.00	BS75	75	6 *	\$ 122.20
BS50	50	6 *	\$ 39.75	BS100	100	6 *	POA
BS63	63	6	\$ 83.20				

Light Angles AS3679/300							
Product Code	Size	Length (M)	\$/M	Product Code	Size	Length (M)	\$/M
A13133	13 x 13 x 3	4 *	\$ 2.30	A50508	50 x 50 x 8	7.5 * / 9	\$ 8.20
A16163	16 x 16 x 3	4 *	\$ 2.95	A55555	55 x 55 x 5	9	\$ 4.75
A20203	20 x 20 x 3	6.1 *	\$ 1.35	A55556	55 x 55 x 6	9	\$ 7.90
A25253	25 x 25 x 3	6 / 7.5 * / 9	\$ 1.40	A65505	65 x 50 x 5	7.5 * / 9	\$ 6.30
A25255	25 x 25 x 5	6 * / 7.5 / 9	\$ 2.00	A65506	65 x 50 x 6	7.5 * / 9	\$ 8.75
A25256	25 x 25 x 6	6 / 7.5 *	\$ 3.25	A65508	65 x 50 x 8	7.5 / 9	\$ 10.95
A30303	30 x 30 x 3	6 / 7.5 * / 9	\$ 1.65	A65655	65 x 65 x 5	7.5 / 9 *	\$ 5.65
A30305	30 x 30 x 5	6 / 7.5 * / 9	\$ 2.55	A65656	65 x 65 x 6	7.5 / 9 *	\$ 7.25
A30306	30 x 30 x 6	6 / 7.5 * / 9	\$ 3.15	A65658	65 x 65 x 8	7.5 / 9 *	\$ 9.25
A40403	40 x 40 x 3	6 / 7.5 * / 9	\$ 2.30	A656510	65 x 65 x 10	7.5 / 9 *	\$ 12.60
A40405	40 x 40 x 5	6 / 7.5 * / 9	\$ 3.80	A75505	75 x 50 x 5	7.5 / 9 *	\$ 6.40
A40406	40 x 40 x 6	6 / 7.5 * / 9	\$ 5.60	A75506	75 x 50 x 6	7.5 / 9 *	\$ 8.65
A45453	45 x 45 x 3	6 / 7.5 * / 9	\$ 2.65	A75508	75 x 50 x 8	7.5 / 9 *	\$ 11.10
A45455	45 x 45 x 5	7.5 * / 9	\$ 3.80	A75755	75 x 75 x 5	9 *	\$ 6.35
A45456	45 x 45 x 6	9	\$ 5.60	A75756	75 x 75 x 6	9 *	\$ 8.35
A50503	50 x 50 x 3	6 / 7.5 * / 9	\$ 2.90	A75758	75 x 75 x 8	9 *	\$ 10.70
A50505	50 x 50 x 5	6 / 7.5 * / 9	\$ 4.25	A757510	75 x 75 x 10	9 *	\$ 12.70
A50506	50 x 50 x 6	6 / 7.5 * / 9	\$ 5.45				

Light Structural Angle AS3679/300							
Product Code	Size	Length (M)	\$/M	Product Code	Size	Length (M)	\$/M
A90906	90 x 90 x 6	9 / 12 *	\$ 10.05	A1001008	100 x 100 x 8	9 / 12 *	\$ 14.45
A90908	90 x 90 x 8	9 / 12 *	\$ 12.95	A10010010	100 x 100 x 10	9 / 12 *	\$ 18.10
A909010	90 x 90 x 10	9 / 12 *	\$ 17.35	A10010012	100 x 100 x 12	9 / 12 *	\$ 25.25
A100756	100 x 75 x 6	9 / 12 *	\$ 10.90	A125756	125 x 75 x 6	9 / 12 *	\$ 13.35
A100758	100 x 75 x 8	9 / 12 *	\$ 15.55	A125758	125 x 75 x 8	9 / 12 *	\$ 18.35
A1007510	100 x 75 x 10	9 / 12 *	\$ 22.55	A1257510	125 x 75 x 10	9 / 12 *	\$ 21.05
A1001006	100 x 100 x 6	9 / 12 *	\$ 11.20	A1257512	125 x 75 x 12	12	\$ 29.45

Heavy Structural Angle AS3679/300							
Product Code	Size	Length (M)	\$/M	Product Code	Size	Length (M)	\$/M
A1251258	125 x 125 x 8	9 / 12 *	\$ 25.20	A15010010	150 x 100 x 10	9 / 12 *	\$ 28.10
A12512510	125 x 125 x 10	9 / 12 *	\$ 29.20	A15010012	150 x 100 x 12	12 *	\$ 36.95
A12512512	125 x 125 x 12	12	\$ 36.60	A15015010	150 x 150 x 10	9 / 12 *	\$ 24.85
A12512516	125 x 125 x 16	12	\$ 54.50	A15015012	150 x 150 x 12	9 / 12	\$ 43.50
A150908	150 x 90 x 8	9 / 12 *	\$ 22.30	A15015016	150 x 150 x 16	9 / 12	\$ 63.95
A1509010	150 x 90 x 10	9 / 12 *	\$ 27.90	A15015019	150 x 150 x 19	12	\$ 72.80
A1509012	150 x 90 x 12	9 / 12	\$ 37.90	A20020013	200 x 200 x 13	12 *	\$ 64.05
A1509016	150 x 90 x 16	9 / 12	\$ 47.90	A20020016	200 x 200 x 16	12	\$ 79.05

Duragal Angles C350LO TS100							
Product Code	Size	Length (M)	\$/M	Product Code	Size	Length (M)	\$/M
AD30302.5	30 x 30 x 2.5	6 *	\$ 3.00	AD50506	50 x 50 x 6.0	9	\$ 14.95
AD40402.5	40 x 40 x 2.5	6 *	\$ 4.00	AD65654	65 x 65 x 4.0	9 *	\$ 12.85
AD40404	40 x 40 x 4.0	6 *	\$ 8.10	AD65655	65 x 65 x 5.0	9 *	\$ 14.40
AD45452.5	45 x 45 x 2.5	6 *	\$ 5.20	AD65656	65 x 65 x 6.0	9	POA
AD45454	45 x 45 x 4.0	6	POA	AD75754	75 x 75 x 4.0	9 *	\$ 13.65
AD50502.5	50 x 50 x 2.5	9 *	\$ 5.05	AD75755	75 x 75 x 5.0	9 *	\$ 15.75
AD50504	50 x 50 x 4.0	9 *	\$ 9.90	AD1001006	100 x 100 x 6.0	12	\$ 32.00
AD50505	50 x 50 x 5.0	9 *	\$ 12.15				

Lintel - Galvanised							
Product Code	Size	Length (M)	\$/Ln	Product Code	Size	Length (M)	\$/Ln
GL858.8	85 x 7	0.8	\$ 10.95	GL1001002.4	100 x 100 x 6	2.4 *	\$ 56.20
GL858.9	85 x 7	0.9	\$ 12.30	GL1001002.7	100 x 100 x 6	2.7 *	\$ 63.20
GL8581.0	85 x 7	1.0 *	\$ 13.70	GL1501001.8	150 x 100 x 6	1.8	\$ 53.60
GL8581.1	85 x 7	1.1	\$ 15.10	GL1501002.1	150 x 100 x 6	2.1	\$ 62.50
GL8581.2	85 x 7	1.2 *	\$ 16.40	GL1501002.4	150 x 100 x 6	2.4	\$ 71.40
GL100100.9	100 x 100 x 6	0.9	\$ 21.10	GL1501002.7	150 x 100 x 6	2.7 *	\$ 80.40
GL1001001.2	100 x 100 x 6	1.2 *	\$ 28.10	GL1501003.0	150 x 100 x 6	3.0 *	\$ 89.30
GL1001001.5	100 x 100 x 6	1.5 *	\$ 35.10	GL1501003.3	150 x 100 x 6	3.3 *	\$ 98.20
GL1001001.8	100 x 100 x 6	1.8 *	\$ 42.10	GL1501003.6	150 x 100 x 6	3.6 *	\$ 107.10
GL1001002.1	100 x 100 x 6	2.1 *	\$ 49.20	GL1501004.0	150 x 100 x 6	4.0 *	\$ 119.00

Light Channel AS3679/300							
Product Code	Size	Length (M)	\$/M	Product Code	Size	Length (M)	\$/M
C5125	51 x 25	6 *	\$ 10.45	C10050	100 x 50	9 / 12 *	\$ 12.45
C7540	75 x 40	9 * / 12	\$ 9.25	C12565	125 x 65	9 / 12 *	\$ 18.60

Heavy Channel AS3679/300							
Product Code	Size	Length (M)	\$/M	Product Code	Size	Length (M)	\$/M
C15075	150 x 75	9 / 10.5 / 12 * / 13.5 / 15	\$ 25.70	C25090	250 x 90	9 / 10.5 / 12 * / 15	\$ 53.10
C18075	180 x 75	9 / 10.5 / 12 * / 15	\$ 30.70	C30090	300 x 90	9 / 12 * / 15	\$ 58.15
C20075	200 x 75	9 / 10.5 / 12 * / 13.5 / 15	\$ 39.60	C380100	380 x 100	9 / 12 *	\$ 80.05
C23075	230 x 75	9 / 12 * / 13.5 / 15	\$ 37.05				

Channel - Duragal							
Product Code	Size	Length (M)	\$/M	Product Code	Size	Length (M)	\$/M
C75404D	75 x 40 x 4	9	\$ 15.20	C15075D	150 x 75 x 5	12	\$ 33.45
C100504D	100 x 50 x 4	9	\$ 20.00	C180755D	180 x 75 x 5	12	\$ 40.75
C125654D	125 x 65 x 4	9	\$ 20.20	C200755D	200 x 75 x 5	12	\$ 47.05

Universal Column AS3679/300							
Product Code	Size	Length (M)	\$/M	Product Code	Size	Length (M)	\$/M
UC10014	100UC14.8	9 / 12 * / 15	\$ 22.20	UC25073	250UC72.9	12 / 15	\$ 108.10
UC15023	150UC23.4	9 / 10.5 / 12 * / 13.5 / 15	\$ 35.05	UC25089	250UC89.5	12 / 15	\$ 128.00
UC15030	150UC30.0	9 / 12 * / 13.5	\$ 46.00	UC31096	310UC96.8	12	\$ 138.40
UC15037	150UC37.2	9 / 12 * / 13.5 / 15	\$ 54.15	UC310118	310UC118	12	\$ 168.75
UC20046	200UC46.2	9 / 12 * / 15	\$ 70.90	UC310137	310UC137	12	\$ 205.90
UC20052.2	200UC52.2	9 / 12 / 15	\$ 77.35	UC310158	310UC158	12	\$ 230.05
UC20060	200UC59.5	9 / 12 / 15 / 18	\$ 89.75				

Taper Flange Beam							
Product Code	Size	Length (M)	\$/M	Product Code	Size	Length (M)	\$/M
TFB10045	100 x 45	9 * / 12	\$ 16.15	TFB12565	125 x 65	9 / 12 *	\$ 34.10





Universal Beam AS3679/300								
Product Code	Size	Length (M)	\$/M		Product Code	Size	Length (M)	\$/M
UB15014	150UB14.0	9 / 12 *	\$ 21.50		UB31046	310UB46.2	9 / 12 * / 15	\$ 70.90
UB15018	150UB18.0	9 / 12 *	\$ 25.75		UB36045	360UB44.7	9 / 12 * / 13.5 / 15 / 18	\$ 63.35
UB18016	180UB16.1	9 / 12	\$ 25.60		UB36051	360UB50.7	9 / 12	\$ 72.20
UB18018	180UB18.1	9 / 12 *	\$ 25.90		UB36057	360UB56.7	12 / 15	\$ 81.15
UB18022	180UB22.2	9 / 12 *	\$ 36.10		UB41053	410UB53.7	9 / 12 / 13.5 / 15	\$ 79.60
UB20018	200UB18.2	9 / 12 *	\$ 26.05		UB41059.7	410UB59.7	9 / 12 / 13.5 / 15	\$ 85.05
UB20022	200UB22.3	12 *	\$ 33.40		UB46067	460UB67.1	9 / 10.5 / 12	\$ 102.95
UB20025	200UB25.4	9 / 10.5 / 12 * / 13.5 / 15	\$ 38.05		UB46074.6	460UB74.6	9 / 10.5 / 12	\$ 114.40
UB20029	200UB29.8	9 / 12 * / 13.5 / 15	\$ 42.45		UB46082	460UB82.1	9 / 12	\$ 120.60
UB25025	250UB25.7	9 / 12 * / 15	\$ 37.45		UB53082	530UB82	9 / 12	\$ 117.30
UB25031	250UB31.4	9 / 10.5 / 12 * / 13.5 / 15	\$ 47.05		UB53092	530UB92.4	15	\$ 134.55
UB25037	250UB37.3	9 / 10.5 / 12 * / 13.5 / 15	\$ 57.25		UB610101	610UB101	12	\$ 148.40
UB31032	310UB32.0	9 / 12 / 15	\$ 45.80		UB610113	610UB113	12 / 18	\$ 179.25
UB31040	310UB40.4	9 / 10.5 / 12 * / 15	\$ 60.55		UB610125	610UB125	12	\$ 155.75

Plate								
Product Code	Thickness (mm)	Size	\$/PI		Product Code	Thickness (mm)	Size	\$/PI
P03	3		\$ 157.30		P06	6		\$ 234.00
P031.21.8	3	1.2 x 1.8 *	\$ 75.70		P061.22.4	6	1.2 x 2.4 *	\$ 197.65
P031.22.4	3	1.2 x 2.4 *	\$ 92.95		P061.23.0	6	1.2 x 3.0	\$ 325.00
P031.22.4GR350	3	1.2 x 2.4	\$ 163.80		P061.23.6	6	1.2 x 3.6	\$ 371.80
P031.23.0	3	1.22 x 3.05	\$ 125.00		P061.26.0	6	1.2 x 6.0	\$ 477.20
P031.23.6	3	1.2 x 3.6	\$ 150.80		P061.53.0	6	1.5 x 3.0	\$ 280.15
P031.24.8GR350	3	1.2 x 4.8	\$ 156.00		P061.53.6	6	1.5 x 3.6	\$ 242.70
P031.26.0	3	1.2 x 6.0 *	\$ 257.75		P061.56.0	6	1.5 x 6.0	\$ 708.50
P031.26.0GR350	3	1.2 x 6.0	\$ 200.90		P061.56.0GR350	6	1.5 x 6.0	\$ 667.40
P031.52.4	3	1.5 x 2.4 *	\$ 120.90		P061.56.5GR350	6	1.5 x 6.5	\$ 544.00
P031.53.0	3	1.5 x 3.0 *	\$ 143.60		P061.83.0	6	1.8 x 3.0	\$ 653.10
P031.53.6	3	1.5 x 3.6	\$ 211.30		P061.83.6	6	1.8 x 3.6	\$ 557.90
P031.56.0	3	1.5 x 6.0	\$ 327.60		P061.86.0	6	1.8 x 6.0	\$ 747.25
P031.82.4	3	1.8 x 2.4	\$ 163.80		P062.46.0	6	2.4 x 6.0	\$ 1,053.00
P031.83.0	3	1.8 x 3.0	\$ 186.55		P062.46.0GR350	6	2.4 x 6.0	\$ 1,547.00
P031.83.6	3	1.8 x 3.6	\$ 240.50		P08	8		\$ 461.50
P031.86.0	3	1.8 x 6.0	\$ 380.25		P081.22.4	8	1.2 x 2.4 *	\$ 244.40
P04	4		POA		P081.23.0	8	1.2 x 3.0	\$ 307.25
P041.22.4	4	1.2 x 2.4 *	\$ 124.00		P081.26.0	8	1.2 x 6.0 *	\$ 775.70
P041.23.0	4	1.2 x 3.0	\$ 177.15		P08GR3501.53.0	8	1.5 x 3.0	\$ 492.20
P041.23.6	4	1.2 x 3.6	\$ 132.80		P081.56.0	8	1.5 x 6.0	\$ 845.00
P041.56.0	4	1.5 x 6.0	\$ 422.50		P081.86.0	8	1.8 x 6.0	\$ 1,101.10
P041.82.4	4	1.8 x 2.4	\$ 162.50		P082.46.0	8	2.4 x 6.0	\$ 1,233.55
P041.86.0	4	1.8 x 6.0	\$ 553.55		P082.46.0GR350	8	2.4 x 6.0	\$ 1,670.50
P05	5		\$ 266.50		P10	10		\$ 931.00
P051.22.4	5	1.2 x 2.4 *	\$ 149.90		P101.22.4	10	1.2 x 2.4 *	\$ 300.30
P051.23.0	5	1.2 x 3.0	\$ 206.05		P101.23.0	10	1.2 x 3.0	\$ 481.00
P051.26.0	5	1.2 x 6.0	\$ 370.50		P101.26.0	10	1.2 x 6.0	\$ 1,001.00
P051.52.4	5	1.5 x 2.4	\$ 238.90		P101.53.0	10	1.5 x 3.0	\$ 479.70
P051.53.0	5	1.5 x 3.0	\$ 239.10		P101.56.0	10	1.5 x 6.0	\$ 1,056.25
P051.56.0	5	1.5 x 6.0	\$ 479.85		P101.86.0	10	1.8 x 6.0	\$ 1,124.50
P051.56.0GR350	5	1.5 x 6.0	\$ 418.40		P102.43.0GR350	10	2.4 x 3.0	\$ 1,138.50
P051.83.0	5	1.8 x 3.0	\$ 310.70		P102.46.0	10	2.4 x 6.0	\$ 1,439.25
P051.86.0	5	1.8 x 6.0	\$ 663.00		P10GR3502.46.0	10	2.4 x 6.0	\$ 2,424.50
P052.46.0	5	2.4 x 6.0	\$ 1,228.50		P103.09.0	10	3.0 x 9.0	\$ 2,893.15
P05GR350	5		\$ 2,485.60		P10GR350	10		\$ 2,931.50

Product Code	Thickness (mm)	Size	\$/PI
P12	12		\$1,118.00
P121.22.4	12	1.2 x 2.4 *	\$ 378.95
P121.52.4	12	1.5 x 2.4	\$ 595.40
P121.53	12	1.5 x 3.0	\$ 573.30
P121.86.0	12	1.8 x 6.0	\$1,349.40
P122.46.0	12	2.4 x 6.0 *	\$1,851.60
P122.46.0GR350	12	2.4 x 6.0	\$2,645.50
P16	16		\$4,108.00
P161.22.4	16	1.2 x 2.4	\$ 505.70
P161.86.0	16	1.8 x 6.0	\$1,391.40
P162.46.0	16	2.4 x 6.0 *	\$2,468.70
P20	20		\$ 734.80
P201.22.4	20	1.2 x 2.4	\$ 643.50
P201.83.0	20	1.8 x 3.0	\$ 728.00

Product Code	Thickness (mm)	Size	\$/PI
P202.46.0	20	2.4 x 6.0	\$ 2,939.30
P25	25		\$ 607.30
P251.86.0	25	1.8 x 6.0	POA
P252.46.0	25	2.4 x 6.0 *	\$ 3,635.95
P28	28		\$ 1,735.50
P32	32		\$ 2,290.10
P322.43.0	32	2.4 x 3.0	\$ 2,938.00
P40	40		\$ 1,495.00
P402.43.0	40	2.4 x 3.0	\$ 3,328.00
P50	50		\$ 1,881.10
P65	65		POA
P75	75		\$ 1,460.40
P80	80		\$ 2,197.00
P100	100		\$ 4,732.00

Floor Plate AS3679/250							
Product Code	Thickness (mm)	Size	\$/PI	Product Code	Thickness (mm)	Size	\$/PI
FP2.1	2.1		\$ 227.00	FP51.53.0	5	1.5 x 3.0	\$ 321.60
FP2.11.21.8	2.1	1.2 x 1.8 *	\$ 58.50	FP51.56.0	5	1.5 x 6.0	\$ 585.00
FP2.11.22.4	2.1	1.2 x 2.4 *	\$ 80.50	FP6	6		\$ 409.50
FP2.11.23.0	2.1	1.2 x 3.0	POA	FP61.22.4	6	1.2 x 2.4 *	\$ 211.40
FP3	3		\$ 89.00	FP61.23.6	6	1.2 x 3.6	\$ 427.00
FP31.22.4	3	1.2 x 2.4 *	\$ 111.25	FP61.26.0	6	1.2 x 6.0 *	\$ 536.95
FP31.23.0	3	1.2 x 3.0	\$ 188.50	FP61.53.0	6	1.5 x 3.0	\$ 387.90
FP31.23.6	3	1.2 x 3.6	\$ 159.90	FP61.56.0	6	1.5 x 6.0	\$ 705.65
FP31.26	3	1.2 x 6.0 *	\$ 280.15	FP61.86.0	6	1.8 x 6.0	\$ 1,288.90
FP4	4		\$ 133.10	FP8	8		\$ 1,196.00
FP5	5		\$ 377.00	FP81.56.0	8	1.5 x 6.0	\$ 949.00
FP51.22.4	5	1.2 x 2.4 *	\$ 173.55	FP81.86.0	8	1.8 x 6.0 *	\$ 1,410.50
FP51.23.6	5	1.2 x 3.6	\$ 388.70	FP10	10		\$ 365.30
FP51.26	5	1.2 x 6.0 *	\$ 461.50	FP101.86.0	10	1.8 x 6.0	\$ 1,917.50

Sheet - Coldrolled							
Product Code	Size	Thickness (mm)	\$/Sh	Product Code	Size	Thickness (mm)	\$/Sh
S.8C/R1.22.4	1220 x 2440	0.8	\$ 27.95	S1.2C/R1.22.4	1220 x 2440 *	1.2	\$ 40.90
S1.0C/R.91.8	915 x 1830	1	\$ 21.00	S1.6C/R1.21.8	1220 x 1830	1.6	\$ 44.20
S1.0C/R1.21.8	1220 x 1830	1	\$ 26.35	S1.6C/R1.22.4	1220 x 2440	1.6	\$ 54.60
S1.0C/R1.22.4	1220 x 2440 *	1	\$ 34.45	S2.0C/R1.52.4	1500 x 2400	2	\$ 83.85
S1.2C/R1.21.8	1220 x 1830	1.2	\$ 32.50				

Sheet - Galvabond							
Product Code	Size	Thickness (mm)	\$/Sh	Product Code	Size	Thickness (mm)	\$/Sh
S.55GAL1.21.8	1200 x 1800 *	0.55	\$ 16.55	S1.55GAL1.22.4	1220 x 2440 *	1.55	\$ 59.15
S.55GAL1.22.4	1220 x 2440 *	0.55	\$ 22.25	S1.55GAL1.23.0	1220 x 3050	1.55	\$ 76.20
S.75GAL1.21.8	1220 x 1830 *	0.75	\$ 22.40	S1.55GAL1.52.4	1500 x 2440	1.55	\$ 80.30
S.75GAL1.22.4	1220 x 2440 *	0.75	\$ 29.85	S1.55GAL1.53.0	1500 x 3050	1.55	\$ 99.35
S.75GAL1.23.0	1220 x 3000	0.75	\$ 52.00	S1.95GAL1.21.8	1220 x 1830 *	1.95	\$ 56.05
S.95GAL.92.4	915 x 2440	0.95	\$ 43.90	S1.95GAL1.22.4	1220 x 2440 *	1.95	\$ 72.80
S.95GAL1.21.8	1220 x 1830 *	0.95	\$ 28.30	S1.95GAL1.5x2.4	1500 x 2400	1.95	\$ 92.95
S.95GAL1.22.4	1220 x 2440 *	0.95	\$ 36.75	S1.95GAL1.53.0	1500 x 3050	1.95	\$ 124.30
S1.15GAL1.21.8	1220 x 1830	1.15	\$ 33.95	S2.4GAL1.22.4	1220 x 2440	2.4	\$ 93.60
S1.15GAL1.22.4	1220 x 2400	1.15	\$ 44.10	S2.4GAL1.2 x 3.0	1200 x 3000	2.4	\$ 118.95
S1.15GAL1.23	1220 x 3050	1.15	\$ 79.30	S2.9GAL1.21.8	1220 x 1830	2.9	\$ 88.40
S1.15GAL1.53.0	1500 x 3050	1.15	\$ 72.15	S2.9GAL1.22.4	1220 x 2440 *	2.9	\$ 114.15
S1.55GAL.9151.83	915 x 1830	1.55	\$ 37.70	S2.9GAL1.52.4	1500 x 2400	2.9	\$ 214.50
S1.55GAL1.21.8	1220 x 1830 *	1.55	\$ 45.00	S2.9GAL1.53.0	1500 x 3050	2.9	\$ 241.80

Sheet - Blackform							
Product Code	Size	Thickness (mm)	\$/Sh	Product Code	Size	Thickness (mm)	\$/Sh
S1.6.9102.44	910 x 2440	1.6	\$ 40.30	S21.23.0	1210 x 3000	2	\$ 78.30
S1.61.21.8	1210 x 1830 *	1.6	\$ 40.30	S21.23.6	1210 x 3600	2	\$ 122.90
S1.61.22.4	1210 x 2440 *	1.6	\$ 54.60	S21.52.4	1510 x 2440	2	\$ 84.50
S1.61.23.0	1210 x 3000	1.6	\$ 65.00	S2.51.21.8	1210 x 1830 *	2.5	\$ 62.40
S1.61.52.4	1510 x 2440	1.6	\$ 69.55	S2.51.22.4	1210 x 2440 *	2.5	\$ 83.20
S21.21.8	1210 x 1830 *	2	\$ 48.10	S2.51.23.0	1210 x 3000	2.5	\$ 58.20
S21.22.4	1210 x 2440 *	2	\$ 64.35				

Sheet - Pickled and Oiled							
Product Code	Size	Thickness (mm)	\$/Sh	Product Code	Size	Thickness (mm)	\$/Sh
S1.6P/O1.22.4	1220 x 2440	1.6	\$ 54.15	S2P/O1.52.4	1500 x 2400	2	POA
S1.6P/O1.52.4	1510 x 2440	1.6	\$ 58.50	S2P/O1.53.0	1525 x 3050	2	\$ 102.70
S1.6P/O1.53.0	1500 x 3050	1.6	\$ 81.85	S3P/O1.22.4	1200 x 2400	3	\$ 99.10

Sheet - Zinalume							
Product Code	Size	Thickness (mm)	\$/Sh	Product Code	Size	Thickness (mm)	\$/Sh
S.55Z1.22.4	1220 x 2440	0.55	\$ 24.10	S1.0Z1.22.4	1220 x 2440	1	\$ 49.20
S.75Z1.22.4	1220 x 2440	0.75	\$ 27.50				

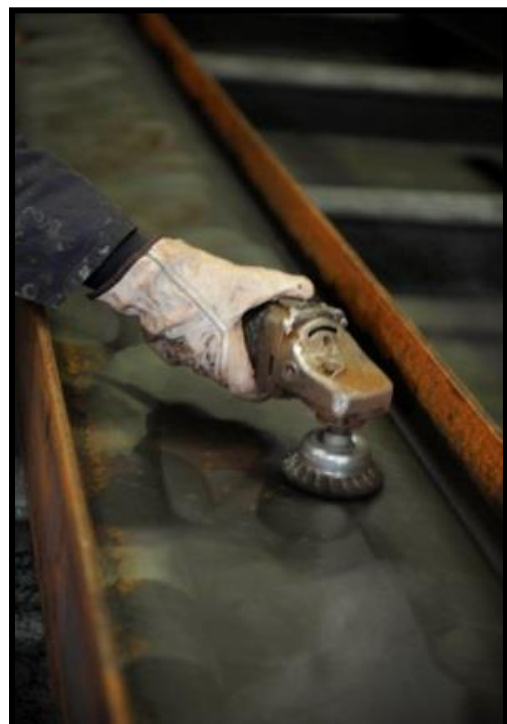
Sheet - Zincanneal							
Product Code	Size	Thickness (mm)	\$/Sh	Product Code	Size	Thickness (mm)	\$/Sh
S.75ZA1.21.8	1220 x 1830	0.75	\$ 24.00	S1.0ZA1.22.4	1200 x 2400	1	\$ 44.20
S1.0ZA1.21.8	1200 x 1800	1	\$ 39.00	S1.6ZA1.22.4	1200 x 2400	1.6	\$ 62.40

Sheet - Zincseal							
Product Code	Size	Thickness (mm)	\$/Sh	Product Code	Size	Thickness (mm)	\$/Sh
S1.2ZSEAL1.22.4	1220 x 2440	1.2	\$ 48.75	S1.6ZSEAL1.22.4	1200 x 2440	1.6	\$ 71.50

Sheet - Colourbond							
Product Code	Size	Thickness (mm)	\$/Sh				
S.55CB1.222.44	1220 x 2440	0.55	\$ 48.75				



SHS - Square Tubeline AS1163 C350LO							
Product Code	Size	Length (M)	\$/M	Product Code	Size	Length (M)	\$/M
SHS0131.8	13 x 13 x 1.8	6.5 *	\$ 1.05	SHS0654	65 x 65 x 4.0	8 *	\$ 11.70
SHS0201.6	20 x 20 x 1.6	6.5 *	\$ 1.50	SHS0655	65 x 65 x 5.0	8	\$ 14.60
SHS0251.6	25 x 25 x 1.6	6.5 *	\$ 1.95	SHS0656	65 x 65 x 6.0	8 *	\$ 16.30
SHS0252	25 x 25 x 2.0	6.5 *	\$ 2.25	SHS0752.5	75 x 75 x 2.5	8 *	\$ 9.35
SHS0252.5	25 x 25 x 2.5	6.5 *	\$ 2.60	SHS0753	75 x 75 x 3.0	8 *	\$ 10.50
SHS0253	25 x 25 x 3.0	6.5 *	\$ 3.10	SHS0753.5	75 x 75 x 3.5	8 *	\$ 14.45
SHS0301.6	30 x 30 x 1.6	8 *	\$ 2.40	SHS0754	75 x 75 x 4.0	8 *	\$ 13.50
SHS0302	30 x 30 x 2.0	8 *	\$ 2.75	SHS0755	75 x 75 x 5.0	8 *	\$ 17.35
SHS0302.5	30 x 30 x 2.5	8	\$ 3.30	SHS0756	75 x 75 x 6.0	8 *	\$ 19.90
SHS0303	30 x 30 x 3.0	8	\$ 4.00	SHS0893.5	89 x 89 x 3.5	8 *	\$ 14.40
SHS0351.6	35 x 35 x 1.6	8 *	\$ 2.65	SHS0895	89 x 89 x 5.0	8 *	\$ 21.80
SHS0352	35 x 35 x 2.0	8 *	\$ 3.40	SHS0896	89 x 89 x 6.0	8 *	\$ 25.65
SHS0352.5	35 x 35 x 2.5	8 *	\$ 3.90	SHS1003	100 x 100 x 3.0	8 *	\$ 14.25
SHS0353	35 x 35 x 3.0	8 *	\$ 4.80	SHS1004	100 x 100 x 4.0	8 *	\$ 18.45
SHS0401.6	40 x 40 x 1.6	8 *	\$ 3.40	SHS1005	100 x 100 x 5.0	8 *	\$ 23.55
SHS0402	40 x 40 x 2.0	8 *	\$ 3.80	SHS1006	100 x 100 x 6.0	8 *	\$ 27.70
SHS0402.5	40 x 40 x 2.5	8 *	\$ 4.60	SHS1009	100 x 100 x 9.0	8 *	\$ 42.80
SHS0403	40 x 40 x 3.0	8 *	\$ 5.25	SHS1254	125 x 125 x 4.0	8 * / 12	\$ 24.05
SHS0404	40 x 40 x 4.0	8 *	\$ 6.90	SHS1255	125 x 125 x 5.0	8 * / 12	\$ 30.70
SHS0501.6	50 x 50 x 1.6	8 *	\$ 4.30	SHS1256	125 x 125 x 6.0	8 * / 12	\$ 36.15
SHS0502	50 x 50 x 2.0	8 *	\$ 4.80	SHS1259	125 x 125 x 9.0	8 * / 12	\$ 52.80
SHS0502.5	50 x 50 x 2.5	8 *	\$ 5.75	SHS1505	150 x 150 x 5.0	8 * / 12	\$ 42.05
SHS0503	50 x 50 x 3.0	8 *	\$ 6.75	SHS1506	150 x 150 x 6.0	8 * / 12	\$ 40.75
SHS0504	50 x 50 x 4.0	8 *	\$ 9.00	SHS1509	150 x 150 x 9.0	8 * / 12	\$ 68.70
SHS0505	50 x 50 x 5.0	8 *	\$ 11.25	SHS2005	200 x 200 x 5.0	8 / 12	\$ 49.55
SHS0652	65 x 65 x 2.0	8	\$ 6.30	SHS2006	200 x 200 x 6.0	8 * / 12	\$ 57.85
SHS0652.5	65 x 65 x 2.5	8 *	\$ 7.80	SHS2009	200 x 200 x 9.0	8 / 12	\$ 115.05
SHS0653	65 x 65 x 3.0	8 *	\$ 7.10	SHS2509	250 x 250 x 9.0	8 / 12	\$ 130.40



RHS - Rectangular AS1163 C350LO							
Product Code	Size	Length (M)	\$/M	Product Code	Size	Length (M)	\$/M
RHS050201.6	50 x 20 x 1.6	8 *	\$ 2.75	RHS100505	100 x 50 x 5.0	8 *	\$ 17.40
RHS050202	50 x 20 x 2.0	8 *	\$ 4.10	RHS100506	100 x 50 x 6.0	8 *	\$ 20.05
RHS050202.5	50 x 20 x 2.5	8	\$ 4.80	RHS102763.5	102 x 76 x 3.5	8	\$ 14.75
RHS050203	50 x 20 x 3.0	8 *	\$ 6.15	RHS102765	102 x 76 x 5.0	8 *	\$ 21.15
RHS050251.6	50 x 25 x 1.6	8 *	\$ 3.20	RHS102766	102 x 76 x 6.0	8	\$ 24.80
RHS050252	50 x 25 x 2.0	8 *	\$ 3.80	RHS125753	125 x 75 x 3.0	8 *	\$ 15.15
RHS050252.5	50 x 25 x 2.5	8 *	\$ 4.40	RHS125754	125 x 75 x 4.0	8 *	\$ 21.90
RHS050253	50 x 25 x 3.0	8 *	\$ 5.20	RHS125755	125 x 75 x 5.0	8 *	\$ 22.70
RHS065352	65 x 35 x 2.0	8 *	\$ 4.75	RHS125756	125 x 75 x 6.0	8 *	\$ 28.25
RHS065352.5	65 x 35 x 2.5	8 *	\$ 5.85	RHS150503	150 x 50 x 3.0	8 *	\$ 14.90
RHS065353	65 x 35 x 3.0	8 *	\$ 6.90	RHS150504	150 x 50 x 4.0	8	\$ 18.55
RHS065354	65 x 35 x 4.0	8 *	\$ 8.70	RHS150505	150 x 50 x 5.0	8 *	\$ 24.05
RHS075251.6	75 x 25 x 1.6	8 *	\$ 4.90	RHS1501004	150 x 100 x 4.0	8 * / 12	\$ 28.10
RHS075252	75 x 25 x 2.0	8 *	\$ 4.95	RHS1501005	150 x 100 x 5.0	8 * / 12	\$ 30.60
RHS075252.5	75 x 25 x 2.5	8 *	\$ 6.00	RHS1501006	150 x 100 x 6.0	8 * / 12	\$ 36.20
RHS075502	75 x 50 x 2.0	8 *	\$ 6.10	RHS1501009	150 x 100 x 9.0	8 / 12	\$ 51.75
RHS075502.5	75 x 50 x 2.5	8 *	\$ 7.30	RHS152765	152 x 76 x 5.0	8	\$ 27.80
RHS075503	75 x 50 x 3.0	8 *	\$ 8.65	RHS152766	152 x 76 x 6.0	8 *	\$ 32.75
RHS075504	75 x 50 x 4.0	8 *	\$ 11.00	RHS2001004	200 x 100 x 4.0	8 * / 12	\$ 34.05
RHS075505	75 x 50 x 5.0	8 *	\$ 13.95	RHS2001005	200 x 100 x 5.0	8 * / 12	\$ 37.15
RHS075506	75 x 50 x 6.0	8 *	\$ 16.05	RHS2001006	200 x 100 x 6.0	8 / 12	\$ 49.75
RHS076383	76 x 38 x 3.0	8 *	\$ 9.40	RHS2001009	200 x 100 x 9.0	8 * / 12	\$ 63.70
RHS100502	100 x 50 x 2.0	8	\$ 7.35	RHS2501505	250 x 150 x 5.0	8 / 12	\$ 66.95
RHS100502.5	100 x 50 x 2.5	8 *	\$ 8.75	RHS2501506	250 x 150 x 6.0	8 / 12	\$ 57.45
RHS100503	100 x 50 x 3.0	8	\$ 10.50	RHS2501509	250 x 150 x 9.0	8 / 12	\$ 104.70
RHS100503.5	100 x 50 x 3.5	8	\$ 14.20	RHS3002009	300 x 200 x 9.0	12	\$ 136.15
RHS100504	100 x 50 x 4.0	8 *	\$ 14.30				

SHS - Allgal and Supagal Square							
Product Code	Size	Length (M)	\$/M	Product Code	Size	Length (M)	\$/M
SHS0201.6G	20 x 20 x 1.6	6.5 *	\$ 1.45	SHS0651.6G	65 x 65 x 1.6	8	\$ 6.75
SHS0251.6G	25 x 25 x 1.6	6.5 *	\$ 2.20	SHS0652G	65 x 65 x 2.0	8	\$ 7.20
SHS0252G	25 x 25 x 2.0	6.5 *	\$ 2.55	SHS0652.5G	65 x 65 x 2.5	8	\$ 8.90
SHS0252.5G	25 x 25 x 2.5	6.5 *	\$ 2.95	SHS0653G	65 x 65 x 3.0	8	\$ 10.30
SHS0301.6G	30 x 30 x 1.6	8 *	\$ 2.70	SHS0654G	65 x 65 x 4.0	8	\$ 13.85
SHS0302G	30 x 30 x 2.0	8 *	\$ 3.15	SHS0752G	75 x 75 x 2.0	8	\$ 8.50
SHS0302.5G	30 x 30 x 2.5	8	\$ 3.85	SHS0752.5G	75 x 75 x 2.5	8	\$ 9.75
SHS0351.6G	35 x 35 x 1.6	8	\$ 3.00	SHS0753G	75 x 75 x 3.0	8	\$ 11.85
SHS0352G	35 x 35 x 2.0	8 *	\$ 3.70	SHS0753.5G	75 x 75 x 3.5	8	\$ 15.10
SHS0352.5G	35 x 35 x 2.5	8	\$ 4.60	SHS0754G	75 x 75 x 4.0	8	\$ 16.60
SHS0353G	35 x 35 x 3.0	8	\$ 5.25	SHS0755G	75 x 75 x 5.0	8	\$ 21.95
SHS0401.6G	40 x 40 x 1.6	8	\$ 3.60	SHS0892G	89 x 89 x 2.0	8	\$ 14.15
SHS0402G	40 x 40 x 2.0	8 *	\$ 4.25	SHS0893.5G	89 x 89 x 3.5	8	\$ 16.90
SHS0402.5G	40 x 40 x 2.5	8	\$ 5.00	SHS0895G	89 x 89 x 5.0	8	\$ 24.40
SHS0403G	40 x 40 x 3.0	8	\$ 6.15	SHS0896G	89 x 89 x 6.0	8	POA
SHS0404G	40 x 40 x 4.0	8	\$ 7.45	SHS1002G	100 x 100 x 2.0	8	\$ 12.30
SHS0501.6G	50 x 50 x 1.6	8	\$ 4.55	SHS1003G	100 x 100 x 3.0	8	\$ 15.75
SHS0502G	50 x 50 x 2.0	8 *	\$ 5.40	SHS1004G	100 x 100 x 4.0	8	\$ 21.60
SHS0502.5G	50 x 50 x 2.5	8	\$ 6.50	SHS1005G	100 x 100 x 5.0	8	\$ 27.70
SHS0503G	50 x 50 x 3.0	8	\$ 7.65	SHS1006G	100 x 100 x 6.0	8	\$ 40.75
SHS0504G	50 x 50 x 4.0	8	\$ 10.10	SHS1254G	125 x 125 x 4.0	8	\$ 28.60

RHS - Allgal and Supagal Rectangular							
Product Code	Size	Length (M)	\$/M	Product Code	Size	Length (M)	\$/M
RHS050201.6G	50 x 20 x 1.6	8	\$ 3.95	RHS075503G	75 x 50 x 3.0	8	\$ 9.60
RHS050202G	50 x 20 x 2.0	8	\$ 6.20	RHS075504G	75 x 50 x 4.0	8	\$ 12.65
RHS050202.5G	50 x 20 x 2.5	8	\$ 11.45	RHS100502G	100 x 50 x 2.0	8	\$ 8.25
RHS050251.6G	50 x 25 x 1.6	8	\$ 3.40	RHS100502.5G	100 x 50 x 2.5	8	\$ 10.05
RHS050252G	50 x 25 x 2.0	8	\$ 4.05	RHS100503G	100 x 50 x 3.0	8	\$ 11.95
RHS050252.5G	50 x 25 x 2.5	8	\$ 4.70	RHS100504G	100 x 50 x 4.0	8	\$ 15.55
RHS065352G	65 x 35 x 2.0	8	\$ 5.35	RHS100505G	100 x 50 x 5.0	8	\$ 20.10
RHS065352.5G	65 x 35 x 2.5	8	\$ 6.55	RHS125753G	125 x 75 x 3.0	8	\$ 16.30
RHS065353G	65 x 35 x 3.0	8	\$ 7.75	RHS125754G	125 x 75 x 4.0	8	\$ 22.65
RHS075251.6G	75 x 25 x 1.6	8	\$ 5.10	RHS125755G	125 x 75 x 5.0	8	\$ 30.90
RHS075252G	75 x 25 x 2.0	8	\$ 5.80	RHS150502G	150 x 50 x 2.0	8	\$ 14.85
RHS075252.5G	75 x 25 x 2.5	8	\$ 6.80	RHS150503G	150 x 50 x 3.0	8	\$ 14.90
RHS075502G	75 x 50 x 2.0	8	\$ 6.70	RHS150504G	150 x 50 x 4.0	8	\$ 18.55
RHS075502.5G	75 x 50 x 2.5	8	\$ 8.35	RHS150505G	150 x 50 x 5.0	8	\$ 24.05

Post Cap - Square					
Product Code	Size (mm)	\$/Each	Product Code	Size (mm)	\$/Each
SPC35	35	\$ 1.40	SPC75	75 *	\$ 5.80
SPC40	40 *	\$ 1.50	SPC90	90	\$ 5.90
SPC50	50 *	\$ 1.70	SPC100	100 *	\$ 5.55
SPC65	65 *	\$ 3.70			

Extra Light Pipe - Black AS1163 C350LO							
Product Code	NB	Length (M)	\$/M	Product Code	NB	Length (M)	\$/M
PELBPE25	25	6.5	\$ 2.85	PELBPE32	32	6.5	\$ 3.50

Light Pipe - Black AS1163 C350LO							
Product Code	NB	Length (M)	\$/M	Product Code	NB	Length (M)	\$/M
PLBPE15	15 *	6.5	\$ 1.85	PLBPE40	40 *	6.5	\$ 5.55
PLBPE20	20 *	6.5	\$ 2.40	PLBPE50	50 *	6.5	\$ 7.75
PLBPE25	25 *	6.5	\$ 3.35	PLBPE65	65	6.5	\$ 10.10
PLBPE32	35 *	6.5	\$ 4.00	PLBPE80	80	6.5	\$ 13.20

Medium Pipe - Black AS1163 C250LO							
Product Code	NB	Length (M)	\$/M	Product Code	NB	Length (M)	\$/M
PMBPE08	8	5.8	POA	PMBPE50	50 *	6.5	\$ 8.15
PMBPE10	10	6.5	\$ 1.75	PMBPE65	65 *	6.5	\$ 10.55
PMBPE15	15 *	6.5	\$ 1.90	PMBPE80	80 *	6.5	\$ 13.60
PMBPE20	20 *	6.5	\$ 2.75	PMBPE90	90 *	6.5	\$ 15.50
PMBPE25	25 *	6.5	\$ 3.90	PMBPE100	100 *	6.5	\$ 19.65
PMBPE32	32 *	6.5	\$ 4.90	PMBPE125	125 *	6.5	\$ 29.05
PMBPE40	40 *	6.5	\$ 5.55	PMBPE150	150 *	6.5	\$ 33.30

Heavy Pipe - Black AS1163 C250LO							
Product Code	NB	Length (M)	\$/M	Product Code	NB	Length (M)	\$/M
PHBPE08	8	5.8	\$ 5.30	PHBPE65	65	6.5	\$ 15.75
PHBPE15	15	6.5	\$ 2.55	PHBPE80	80	6.5	\$ 17.45
PHBPE20	20	6.5	\$ 3.70	PHBPE90	90	6.5	\$ 20.30
PHBPE25	25	6.5	\$ 4.90	PHBPE100	100	6.5	\$ 25.45
PHBPE32	32	6.5	\$ 6.55	PHBPE125	125	6.5	\$ 39.35
PHBPE40	40	6.5	\$ 7.70	PHBPE150	150	6.5	\$ 38.80
PHBPE50	50	6.5	\$ 10.60				

Extra Heavy Pipe - Black AS1163 C250LO							
Product Code	NB	Length (M)	\$/M	Product Code	NB	Length (M)	\$/M
PEHBPE15	15	6.5	POA	PEHBPE50	50 *	6.5	\$ 16.45
PEHBPE20	20	6.5	\$ 5.35	PEHBPE65	65 *	6.5	\$ 25.20
PEHBPE32	32	6.5	\$ 13.25	PEHBPE80	80	6.5	\$ 28.35
PEHBPE40	40 *	6.5	\$ 12.20				

Light Pipe - Galvanised AS1163 C350LO							
Product Code	NB	Length (M)	\$/M	Product Code	NB	Length (M)	\$/M
PLGPE15	15	6.5	\$ 1.80	PLGPE40	40 *	6.5	\$ 5.50
PLGPE20	20 *	6.5	\$ 2.25	PLGPE50	50 *	6.5	\$ 6.85
PLGPE25	25 *	6.5	\$ 3.30	PLGPE65	65 *	6.5	\$ 9.80
PLGPE32	32 *	6.5	\$ 4.30	PLGPE80	80 *	6.5	\$ 12.65

Medium Pipe - Galvanised AS1163 C250LO							
Product Code	NB	Length (M)	\$/M	Product Code	NB	Length (M)	\$/M
PMGPE08	8	6.5	\$ 5.85	PMGPE50	50 *	6.5	\$ 8.30
PMGPE10	10	6.5	POA	PMGPE65	65 *	6.5	\$ 10.55
PMGPE15	15 *	6.5	\$ 2.05	PMGPE80	80 *	6.5	\$ 14.10
PMGPE20	20 *	6.5	\$ 2.75	PMGPE90	90 *	6.5	\$ 15.80
PMGPE25	25 *	6.5	\$ 3.80	PMGPE100	100 *	6.5	\$ 20.00
PMGPE32	32 *	6.5	\$ 5.20	PMGPE125	125 *	6.5	\$ 27.25
PMGPE40	40 *	6.5	\$ 5.90	PMGPE150	150 *	6.5	\$ 33.90

Heavy Pipe - Galvanised AS1163 C250LO							
Product Code	NB	Length (M)	\$/M	Product Code	NB	Length (M)	\$/M
PHGPE20	20	6.5	POA	PHGPE65	65	6.5	\$ 14.85
PHGPE25	25	6.5	\$ 10.40	PHGPE80	80	6.5	\$ 22.45
PHGPE32	32	6.5	\$ 7.25	PHGPE90	90	6.5	POA
PHGPE40	40	6.5	\$ 7.55	PHGPE100	100	6.5	POA
PHGPE50	50	6.5	\$ 22.95	PHGPE150	150	6.5	POA

Medium Screwed Both Ends Pipe - Galvanised AS1163 C250LO							
Product Code	NB	Length (M)	\$/M	Product Code	NB	Length (M)	\$/M
PMGSBE15	15	6.5	\$ 3.25	PMGSBE40	40 *	6.5	\$ 9.10
PMGSBE20	20 *	6.5	\$ 3.70	PMGSBE50	50 *	6.5	\$ 12.45
PMGSBE25	25 *	6.5	\$ 6.25	PMGSBE80	80	6.5	\$ 15.55
PMGSBE32	32 *	6.5	\$ 7.95	PMGSBE100	100	6.5	\$ 54.85

Heavy Screwed Both Ends Pipe - Galvanised AS1163 C250LO							
Product Code	NB	Length (M)	\$/M				
PHGSBE100	100	6.5	POA				

Post Cap - Round							
Product Code	NB	\$/Each	Product Code	NB	\$/Each		
PC20	20	\$ 1.00	PC80	80 *	\$ 5.00		
PC25	25 *	\$ 1.40	PC90	90	\$ 5.10		
PC32	32 *	\$ 1.40	PC100	100	\$ 5.50		
PC40	40 *	\$ 1.70	PC125	125	\$ 11.20		
PC50	50 *	\$ 1.80	PC150	150	\$ 12.90		
PC65	65 *	\$ 3.00					

Long Radius Elbow						
Product Code	Size (mm x Degrees)	\$/Each		Product Code	Size (mm x Degrees)	\$/Each
FBS-ELR45-25	25 x 45°	POA		FBS-ELR90-25	25 x 90°	\$ 3.55
FBS-ELR45-32	32 x 45°	POA		FBS-ELR90-32	32 x 90°	\$ 4.10
FBS-ELR45-40	40 x 45°	POA		FBS-ELR90-40	40 x 90°	\$ 4.80
FBS-ELR45-50	50 x 45°	POA		FBS-ELR90-50	50 x 90°	\$ 6.00
FBS-ELR45-65	65 x 45°	POA		FBS-ELR90-65	65 x 90°	\$ 11.30
FBS-ELR45-80	80 x 45°	POA		FBS-ELR90-80	80 x 90°	POA
FBS-ELR45-100	100 x 45°	POA		FBS-ELR90-90	90 x 90°	POA
FBS-ELR45-125	125 x 45°	POA		FBS-ELR90-100	100 x 90°	POA
FBS-ELR45-150	150 x 45°	POA		FBS-ELR90-125	125 x 90°	POA
FBS-ELR90-15	15 x 90°	POA		FBS-ELR90-150	150 x 90°	POA
FBS-ELR90-20	20 x 90°	\$ 3.20				

Short Radius Elbow						
Product Code	Size (mm x Degrees)	\$/Each		Product Code	Size (mm x Degrees)	\$/Each
FBS-ESR90-25	25 x 90°	\$ 5.50		FBS-ESR90-80	80 x 90°	POA
FBS-ESR90-32	32 x 90°	\$ 7.40		FBS-ESR90-90	90 x 90°	POA
FBS-ESR90-40	40 x 90°	\$ 7.95		FBS-ESR90-100	100 x 90°	POA
FBS-ESR90-50	50 x 90°	\$ 9.50		FBS-ESR90-125	125 x 90°	POA
FBS-ESR90-65	65 x 90°	POA		FBS-ESR90-150	150 x 90°	POA

Screw-On Socket - Black						
Product Code	mm	\$/Each		Product Code	mm	\$/Each
FSB-SOC-25	25	\$ 2.50		FSB-SOC-40	40	\$ 3.30

Buttweld Tee			
Product Code	Size (mm)	\$/Each	
FBS-TEE-50	50	\$ 19.90	

Round ERW - Semi-Bright								
Product Code	Size	Length (M)	\$/M		Product Code	Size	Length (M)	\$/M
ERW12.71.2	12.7 x 1.2 *	6.1	\$ 1.35		ERW381.6	38.0 x 1.6 *	6.1	\$ 4.75
ERW12.71.6	12.7 x 1.6 *	6.1	\$ 1.65		ERW382.0	38.0 x 2.0	6.1	\$ 5.20
ERW161.2	16.0 x 1.2	6.1	\$ 1.60		ERW383.2	38.0 x 3.2 *	6.1	\$ 14.65
ERW161.6	16.0 x 1.6 *	6.1	\$ 1.95		ERS44.51.6	44.5 x 1.6	6.1	\$ 4.35
ERW191.2	19.0 x 1.2 *	6.1	\$ 1.80		ERW47.61.6	47.6 x 1.6	6.1	\$ 5.10
ERW191.6	19.0 x 1.6 *	6.1	\$ 1.85		ERW511.2	51.0 x 1.2	6.1	\$ 4.25
ERW22.21.4	22.2 x 1.4	6.1	\$ 2.60		ERW511.6	51.0 x 1.6 *	6.1	\$ 5.20
ERW22.21.6	22.2 x 1.6	6.1	\$ 2.40		ERW512.0	51.0 x 2.0	6.1	\$ 6.40
ERW25.41.2	25.4 x 1.2	6.1	\$ 2.15		ERW513.2	51.0 x 3.2	6.1	\$ 8.70
ERW25.41.4	25.4 x 1.4	6.1	\$ 2.40		ERW57.21.6	57.2 x 1.6	6.1	\$ 5.90
ERW25.41.6	25.4 x 1.6 *	6.1	\$ 2.95		ERW57.22.0	57.2 x 2.0	6.1	\$ 6.20
ERW25.42.0	25.4 x 2.0	6.1	\$ 3.35		ERW63.51.6	63.5 x 1.6	6.1	\$ 7.10
ERW25.42.6	25.4 x 2.6	6.1	\$ 13.90		ERW63.52.0	63.5 x 2.0	6.1	\$ 10.40
ERW28.61.6	28.6 x 1.6	6.1	\$ 2.70		ERW761.6	76.0 x 1.6 *	6.1	\$ 7.90
ERW31.81.6	31.8 x 1.6 *	6.1	\$ 3.95		ERW88.91.6	88.9 x 1.6	6.1	\$ 10.25
ERW31.82.0	31.8 x 2.0	6.1	\$ 4.20		ERW101.61.6	101.6 x 1.6	6.1	\$ 10.80
ERW31.83.2	31.8 x 3.2	6.1	\$ 13.30		ERW1521.6	152 x 1.6	6.1	\$ 70.60

Square ERW - Semi-Bright								
Product Code	Size	Length (M)	\$/M		Product Code	Size	Length (M)	\$/M
ERW12.712.71.2	12.7 x 12.7 x 1.2	6.1	\$ 2.00		ERW22.222.21.6	22.2 x 22.2 x 1.6	6.1	\$ 2.85
ERW12.712.71.6	12.7 x 12.7 x 1.6 *	6.1	\$ 1.95		ERW25.425.41.2	25.4 x 25.4 x 1.2	6.1	\$ 2.60
ERW16161.6	16 x 16 x 1.6	6.1	\$ 2.35		ERW25.425.41.6	25.4 x 25.4 x 1.6	6.1	\$ 3.20
ERW19191.2	19 x 19 x 1.2	6.1	\$ 2.30		ERW31.831.81.6	31.8 x 31.8 x 1.6	6.1	\$ 3.95
ERW19191.6	19 x 19 x 1.6	6.1	\$ 2.45		ERW38381.6	38 x 38 x 1.6	6.1	\$ 5.85
ERW22.222.21.2	22.2 x 22.2 x 1.2	6.1	\$ 2.35		ERW50501.6	50 x 50 x 1.6	6.1	\$ 6.35



Rectangular ERW - Semi-Bright							
Product Code	Size	Length (M)	\$/M	Product Code	Size	Length (M)	\$/M
ERW25.412.71.6	25.4 x 12.7 x 1.6 *	6.1	\$ 2.10	ERW38251.6	38.0 x 25.4 x 1.6	6.1	\$ 4.30
ERW31.812.71.6	31.8 x 12.7 x 1.6 *	6.1	\$ 3.10	ERW50251.6	50.8 x 25.4 x 1.6 *	6.1	\$ 4.90
ERW31.822.21.6	31.8 x 22.2 x 1.6	6.1	\$ 8.30	ERW5131.82	51.0 x 31.8 x 2.0	6.1	\$ 6.85
ERW35191.6	35.0 x 19.0 x 1.6 *	6.1	\$ 3.35				

Round ERW - Galvanised							
Product Code	Size	Length (M)	\$/M	Product Code	Size	Length (M)	\$/M
ERW12.7.9G	12.70 x 0.9	6.1	\$ 1.60	ERW22.21.2G	22.20 x 1.2	7.32	\$ 1.90
ERW161.2G	15.88 x 1.2	7.32	\$ 1.40	ERW25.41.2G	25.40 x 1.2	7.32	\$ 2.20
ERW161.6G	16.00 x 1.6	6.1	\$ 1.80	ERW25.41.6G	25.40 x 1.6 *	6.1	\$ 2.80
ERW191.2G	19.00 x 1.2 *	7.32	\$ 1.25	ERW31.81.6G	31.80 x 1.6 *	6.1	\$ 3.35
ERW191.6G	19.00 x 1.6	7.32	\$ 2.50	ERW38.11.6G	38.10 x 1.6	6.1	\$ 4.05

Square ERW - Galvabond							
Product Code	Size	Length (M)	\$/M	Product Code	Size	Length (M)	\$/M
ERW12.712.71.2G	12.7 x 12.7 x 1.2	6.1	\$ 1.60	ERW25.425.41.6G	25.4 x 25.4 x 1.6	6.1	\$ 3.40
ERW16161.2G	16.0 x 16.0 x 1.2	6.1	\$ 1.70	ERW51511.6G	51.0 x 51.0 x 1.6	6.1	\$ 5.90

Rectangular ERW - Galvanised							
Product Code	Size	Length (M)	\$/M	Product Code	Size	Length (M)	\$/M
ERW191.2G	19 x 1.2 x 7.2	6.1	\$ 1.70	ERW38251.6G	38 x 25.4 x 1.6 *	7.32	\$ 4.40
ERW35191.6G	35 x 19 x 1.6	6.1	\$ 3.50	ERW50251.6G	50 x 25 x 1.6	6.1	\$ 5.40

Oval Tube - ERW							
Product Code	Size	Length (M)	\$/M	Product Code	Size	Length (M)	\$/M
ERW31.817.51.6	31.8 x 17.5 x 1.6	6.1	\$ 3.00	ERW31.817.52.0	31.8 x 17.5 x 2.0	6.1	POA

Flat Sided Oval - ERW							
Product Code	Size	Length (M)	\$/M				
ERW51161.6-FSO	50.8 x 15.9 x 1.6	6.1	\$ 3.30				

CS1020 Round Bright Bar (metric)							
Product Code	Size (mm)	Length (M)	\$/M	Product Code	Size (mm)	Length (M)	\$/M
BB04	4	3.5	\$ 0.40	BB30	30	6.0 *	\$ 13.80
BB05	5	3.5	\$ 1.05	BB33	33	6.0	\$ 13.50
BB06	6	3.5	\$ 0.80	BB35	35	6.0	\$ 22.10
BB08	8	3.5 *	\$ 1.20	BB39	39	6.0	\$ 24.40
BB10	10	3.5 *	\$ 1.95	BB40	40	6.0	\$ 24.70
BB12	12	6.0	\$ 2.30	BB45	45	6.0	\$ 38.80
BB16	16	6.0 *	\$ 3.95	BB50	50	6.0	\$ 140.40
BB18	18	6.0	\$ 6.20	BB60	60	6.0	\$ 111.80
BB20	20	6.0 *	\$ 6.20	BB65	65	6.0 *	\$ 91.10
BB22	22	6.0	\$ 7.45	BB100	100	6.0	\$ 192.50
BB25	25	6.0 *	\$ 9.90				

CS1020 Round Bright Bar (imperial)							
Product Code	Size (Inch)	Length (M)	\$/M	Product Code	Size (Inch)	Length (M)	\$/M
BB1/4	1/4	3.5	\$ 1.00	BB11/8	1 1/8	6.0	\$ 12.45
BB5/16	5/16	3.5	\$ 2.90	BB11/4	1 1/4	6.0 *	\$ 14.60
BB3/8	3/8	3.5 *	\$ 3.20	BB11/2	1 1/2	6.0 *	\$ 22.15
BB7/16	7/16	6.0	\$ 2.50	BB13/8	1 3/8	6.0	\$ 22.00
BB1/2	1/2	6.0 *	\$ 2.55	BB13/4	1 3/4	6.0 *	\$ 30.95
BB5/8	5/8	6.0 *	\$ 3.45	BB2	2	6.0 *	\$ 62.40
BB3/4	3/4	6.0 *	\$ 5.75	BB21/2	2 1/2	6.0	\$ 162.50
BB7/8	7/8	6.0 *	\$ 9.00	BB3	3	6.0 *	\$ 80.90
BB1	1	6.0 *	\$ 10.00	BB4	4	6.0 *	\$ 182.00

S1214 Round Bright Bar (metric)								
Product Code	Size (mm)	Length (M)	\$/M		Product Code	Size (mm)	Length (M)	\$/M
BB05S1214	5	3.5	\$ 0.90		BB20S1214	20	3.5	\$ 7.30
BB12S1214	12	3.5	\$ 2.60		BB27S1214	27	3.5	\$ 12.30
BB16S1214	16	3.5	\$ 4.40		BB50S1214	50	3.5	\$ 45.50
S1214 Round Bright Bar (imperial)								
Product Code	Size (Inch)	Length (M)	\$/M		Product Code	Size (Inch)	Length (M)	\$/M
BB1/4S1214	1/4	3.5	\$ 0.60		BB1S1214	1	3.5	\$ 11.70
BB1/2S1214	1/2	3.5	\$ 2.50		BB2S1214	2	3.5	\$ 32.40
BB3/4S1214	3/4	3.5	\$ 4.90					

K1040 Round Bright Bar (metric)								
Product Code	Size (mm)	Length (M)	\$/M		Product Code	Size (mm)	Length (M)	\$/M
BB12K1040	12	6.0	\$ 1.60		BB25K	25	6.0	\$ 8.80
BB20K	20	6.0	\$ 7.50		BB40K	40	6.0	\$ 20.50
BB22K	22	6.0	\$ 6.50		BB50K	50	6.0	\$ 42.90
K1040 Round Bright Bar (imperial)								
Product Code	Size (Inch)	Length (M)	\$/M		Product Code	Size (Inch)	Length (M)	\$/M
BB1/2K	1/2	6.0	\$ 3.40		BB1K	1	6.0	\$ 9.40
BB5/8K	5/8	6.0	\$ 5.60		BB11/4K	1 1/4	6.0	\$ 15.10
BB3/4K	3/4	6.0	\$ 7.80		BB11/2K	1 1/2	6.0	\$ 42.20
BB7/8K	7/8	6.0	\$ 7.20		BB2K	2	6.0	\$ 37.10

**Concrete Meshes, Gate Infills, Fence Panels, etc.**

Square Reinforcing Mesh							
Product Code		M	\$/M		Product Code		\$/M
RMF41	F41	6 x 2.4	\$ 75.76		RMF62	F62	\$ 49.40
RMF42H	F42	30 x 2.4	POA		RMF72	F72	\$ 58.75
RMF42R	F42	60 x 2.4	POA		RMF81	F81	\$ 155.00
RMF52	F52	6 x 2.4	\$ 36.25		RMF82	F82	\$ 72.00
RMF52H	F52	30 x 2.4	POA		RMF92	F92	\$ 91.25
RMF52R	F52	60 x 2.4	POA		RMF102	F102	\$ 117.50

Rectangular Reinforcing Mesh							
Product Code		M	\$/M		Product Code		\$/M
RMF718	F718	6 x 2.4	\$ 111.90		RMF1018	F1018	\$ 156.25
RMF818	F818	6 x 2.4	\$ 128.15		RMF1118	F1118	\$ 237.50
RMF918	F918	6 x 2.4	\$ 143.75		RMF1218	F1218	\$ 281.25

Bar Trench Mesh								
Product Code	Size	Length (M)	\$/M		Product Code	Size	Length (M)	\$/M
RMTM83	8/3	6	\$ 14.00		RMTM116	11/6	6	\$ 71.75
RMTM84	8/4	6	\$ 17.50		RMTM123	12/3	6	\$ 25.90
RMTM85	8/5	6	\$ 21.90		RMTM124	12/4	6	\$ 34.40
RMTM113	11/3	6	\$ 23.10		RMTM125	12/5	6	\$ 48.90
RMTM114	11/4	6	\$ 28.25		RMTM126	12/6	6	\$ 87.45
RMTM115	11/5	6	\$ 38.40					

Plastic Bar Chairs								
Product Code	Size	No. per Bag	\$/100		Product Code	Size	No. per Bag	\$/100
RMBC2540	25 x 40	100	\$ 0.15		RMBC7590	75 x 90	100	\$ 0.25
RMBC5065	50 x 65	100	\$ 0.20		RMBC85100	85 x 100	100	\$ 0.30

Deformed Bar								
Product Code	Size	Standard Length (M)	\$/M		Product Code	Size	Standard Length (M)	\$/M
DBY12	Y12 *	6	\$ 1.50		DBY24	Y24	6	\$ 5.60
DBY16	Y16 *	6	\$ 2.60		DBY28	Y28	6	\$ 7.60
DBY20	Y20 *	6	\$ 3.55					

Polythene Film, Fortecon			
Product Code	Length (M) x Width (M)	Thickness (mm)	\$/Roll
RMP	50 x 4	0.2	\$ 96.55

PVC Tape		
Product Code	M x mm	\$/Each
RMT	30 x 48	\$ 4.70

Capping			
Rolltop Ridge - Colour			
Product Code	Steel Grade	Length (M)	\$/M
CORRROLLTOPC	550		\$ 8.94
Rolltop Ridge - Zinc			
Product Code	Steel Grade	Length (M)	\$/M
CORRROLLTOPZ	550		\$ 8.06

Roofing & Walling Products			
Monoclad - Colourbond			
Product Code	BMT (mm)	Cover (mm)	\$
MONOCLADCB	0.42	762	\$ 16.10
Monoclad - Zinc			
Product Code	BMT (mm)	Cover (mm)	\$
MONOCLADZINC	0.42	762	\$ 12.05

Loop Tie Wires			
Product Code	Size (mm)	Per Pack	\$
RMLT110	110	2000 *	\$ 24.85
RMLT125	125	2000 *	\$ 45.00
RMLT150	150	2000	\$ 49.00

Downpipe - Coloured			
Product Code	Standard 0.40 BMT	Length (M)	\$/M
ROOFDP10050Cx2.4	100 x 50	x 2.4	\$ 22.40
ROOFDP10075Cx2.4	100 x 75	x 2.4	\$ 29.25
Downpipe - Zinc			
Product Code	Standard 0.40 BMT	Length (M)	\$/M
ROOFDP10050Zx2.4	100 x 50	x 2.4	\$ 16.10
ROOFDP10075Zx2.4	100 x 75	x 2.4	\$ 35.85

Gutter & Capping			
Quad Gutter			
Product Code	Profile	Length (M)	\$
ROOFQUADGUTTERC	Colourbond Quad Gutter	6	\$ 5.20
ROOFQUADGUTTERZ	Zincalume Quad Gutter	6	\$ 3.90
ROOFQUAD/B	Quad Internal Brackets		\$ 0.95

Purlins - Zincform			
Product Code	Code	STK Length (M)	\$/LM
PUR10010	C10010		\$ 3.65
PUR10012	C10012		\$ 4.35
PUR10015	C10015	6 * / 7 *	\$ 5.40
PUR10019	C10019	6 * / 7 *	\$ 6.75
PUR15012	C15012		\$ 6.00
PUR15015	C15015	6 * / 7 * / 8 *	\$ 7.40
PUR15019	C15019	6 / 7 * / 8 *	\$ 9.30
PUR15024	C15024		\$ 11.65
PUR20015	C20015	7 * / 8 *	\$ 8.75
PUR20019	C20019	7 * / 8 *	\$ 11.80
PUR20024	C20024		\$ 14.85

Product Code	Code	STK Length (M)	\$/LM
PUR25019	C25019		\$ 13.35
PUR25024	C25024		\$ 16.85
PUR30024	C30024		\$ 22.85
PURZ10015	Z10015	6 * / 7 *	\$ 5.40
PURZ10019	Z10019	6 * / 7 *	\$ 6.75
PURZ15012	Z15012		\$ 6.00
PURZ15015	Z15015	6 * / 7 * / 8 *	\$ 7.40
PURZ15019	Z15019	6 / 7 * / 8 *	\$ 9.30
PURZ15024	Z15024		\$ 11.65
PURZ20015	Z20015	7 * / 8 *	\$ 9.25
PURZ20019	Z20019	7 * / 8 *	\$ 11.80



Hollow Bar								
Product Code	Outside Diameter x Inside Diameter	Kg/M	\$/Kg		Product Code	Outside Diameter x Inside Diameter	Kg/M	\$/Kg
HB3625	36 x 25	4.5	POA		HB6345	63 x 45	15.6	POA
HB4028	40 x 28	5.5	POA		HB7540	75 x 40	12.8	POA
HB5025	50 x 25	12.3	POA		HB9050	90 x 50	36.7	POA
HB5032	50 x 32	10.2	POA		HB9067	90 x 67	24.3	POA
HB5036	50 x 36	8	POA		HB9567	95 x 67	29.7	POA
HB5640	56 x 40	4	POA		HB10075	100 x 75	30.7	POA
HB6332	63 x 32	10.6	POA		HB132112	132 x 112	34.4	POA
HB6340	63 x 40	18.8	POA					

**Eltrack**

Graduate 120 (Domestic)			
Product Code	Description	Pack	\$
EG12	4 Wheel Steel Carriage	100	\$ 27.30
EG18	Bracket - Weld On	150	\$ 3.65
EG19	Bracket - Bolt On Single	150	\$ 7.80
EG20	Bracket - Single Side Fix	100	\$ 6.10
EG2T	Door Track - Galvanised	60 M Length	\$ 12.75

Director 200 (Light Industrial)			
Product Code	Description	Pack	\$
ED12	4 Wheel Steel Carriage	80	\$ 30.95
ED12LP	4 Wheel Steel Carriage - Long Pin	80	\$ 32.00
ED19	Bracket - Bolt On Single	140	\$ 4.55
ED2T	Door Track - Galvanised	60 M Length	\$ 14.55
ED7	2 Wheel Nylon Carriage	100	\$ 31.30

Matador 450 (Medium Industrial)			
Product Code	Description	Pack	\$
EM1T	Door Track - Galvanised	40 M Length	\$ 23.10
EH12LP	4 Wheel Steel Carriage	30	\$ 59.10
EH12ST	5 Wheel Steel Carriage	30	\$ 62.80

Hercules 650 (Heavy Industrial)			
Product Code	Description	Pack	\$
EH1	Door Track - Galvanised	40 M Length	\$ 27.20
EH15ST	5 Wheel Steel Carriage	30	\$ 114.40
EH16ST	5 Wheel Steel Carriage	20	\$ 82.70

Common to Matador 450 and Hercules 650			
Product Code	Description	Pack	\$
EH5	Bottom Door Guide Pin	80	\$ 10.90
EH19	Bracket - Bolt On Single	50	\$ 6.40
EH19BS	Bolt Set	200	\$ 3.20
EH20C	Bracket - Single Side Fix 43 mm	20	\$ 14.20

Product Code	Description	Pack	\$
EH21	Bracket - Two Piece	40	\$ 8.40
EH24	Bracket - Double Support	20	\$ 25.30
EH30	Track End Stop	200	\$ 2.30



**Welding Supplies**

Grinding Discs		
Product Code	Size	\$
WSGD102	102 x 6.0 x 16.0 *	\$ 1.95
WSGD125	125 x 6.8 x 22.0 *	\$ 2.80
WSGD230	230 x 6.8 x 22.2 *	\$ 6.40

Cutting Discs		
Product Code	Size	\$
WSCD102	102 x 2.5 x 16.0 *	\$ 1.95
WSCD125	127 x 2.5 x 22.2 *	\$ 2.50
WSCD230	230 x 2.5 x 22.5 *	\$ 4.30
WSCD356	356 x 3.0 x 25.0 *	\$ 8.30

Ball Bearing Hinge		
Product Code	Description	\$
HINGELH	Left hand	\$ 18.00
HINGERH	Right hand	\$ 18.00

Door Frame			
Product Code	Size	Hand	\$
DF720LH	720	Left Hand	\$ 64.30
DF820LH	820	Left Hand	\$ 79.30
DF620RH	620	Right Hand	\$ 64.35
DF720RH	720	Right Hand	\$ 64.30
DF770RH	770	Right Hand	\$ 64.30
DF820RH	820	Right Hand	\$ 79.30
DF920RH	920	Right Hand	\$ 79.50
DF1020RH	1020	Right Hand	\$ 117.95

Double Door Frame		
Product Code	Size	\$
DFD1240	1240	\$ 86.75
DFD1640	1640	\$ 89.55

Paints							
Product Code	Description	Litres	\$	Product Code	Description	Litres	\$
PAINTDG-S	Duragal Spray Can	350 G *	\$ 13.65	PAINTMK5L	Metakleen	5	POA
PAINTDG-4L	Duragal Can	4*	\$ 14.75	PAINTB20	Blue Primer	20 *	POA
PAINTB4	Blue Primer	4	POA	PAINTBLK20	Black Enamel	20 *	POA
PAINTBLK4	Black Enamel	4	POA	PAINTG20	Grey Primer	20 *	POA
PAINTCG	358 Zinc Prep	4	POA	PAINTHRO	Hi Luster Red Oxide	20 *	POA
PAINTG4	Grey Primer	4	POA	PAINTMG20L	Melsteel Grey	20 *	POA
PAINTHFMR	Hammer Finish Red	4	POA	PAINTO20LT	Safety Orange	20 *	POA
PAINTO4LT	Safety Orange	4	POA	PAINTR20	Red Oxide	20 *	POA
PAINTR4	Red Oxide	4	POA	PAINTMK25L	Metakleen	25	POA
PAINTRED4LTR	Red Enamel	4	POA	THINNER4	445 Enamel Thinners	4	POA
PAINTS	Silver	4	POA	THINNERS20	445 Enamel Thinners	20	POA
PAINTWHT4LTR	White Enamel	4	POA	THINNERS445-60L	445 Enamel Thinners	60	POA
PAINTY4LT	Safety Yellow	4	POA				

Allthread - Zinc					
Product Code	Size (mm)	\$/ 1 M Length	Product Code	Size (mm)	\$/ 1 M Length
ALLTHREAD 8	8	\$ 1.65	ALLTHREAD 16	16	\$ 21.30
ALLTHREAD 10	10	\$ 8.40	ALLTHREAD 20	20	\$ 13.50
ALLTHREAD 12	12	\$ 11.05	ALLTHREAD 24	24	\$ 12.55

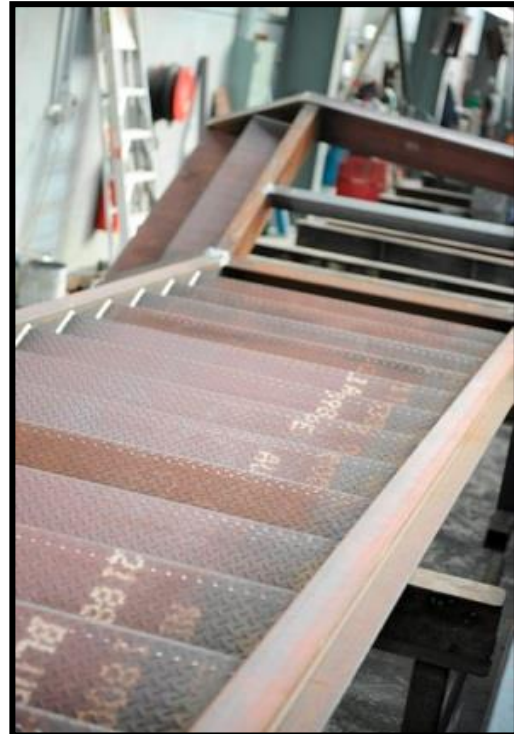


**Solasafe Polycarbonate Sheeting**

Polycarbonate Corrugated						
Cover: 760 mm Thickness: 0.8 mm	Length (mm)	\$/Sheet		Cover: 760 mm Thickness: 0.8 mm	Length (mm)	\$/Sheet
	1800	\$ 20.70			3600	\$ 41.40
	2100	\$ 24.15			4200	\$ 48.30
	2400	\$ 27.60			4800	\$ 55.20
	2700	\$ 31.05			6000	\$ 69.00
	3000	\$ 34.50				

Available colours include: Clear, Opal, Light Bronze, Dark Tint, and Grey

Accessory Products			
Product Code	Description	Quantity	\$
POLYS/S	12 x 50 mm Multi-Drive Screws	50/50	\$ 14.50



Expanded Metal

Expamet Steel Gridwalk (WK) - Black									
Product Code	Mesh Reference	Sheet Sizes	\$/M <sup>2</sup>	Nominal Size of Mesh		Approximate Strand Size		Weight Kg/M <sup>2</sup>	Overall Height
		LW x SW		LWM	SWM	Width	Thick		
EMWK2517B	2517	1.2 x 3.0	POA	60	25	5.6	5.0	17.0	11.0
EMWK3022B	3022	1.2 x 3.0	POA	75	30	7.8	5.0	22.0	13.0
EMWK3028B	3028	1.2 x 3.0	POA	75	30	10.7	5.0	28.0	15.0
EMWK3414B.6x3M	3414	.6 x 3.0	POA	120	34	6.4	5.0	14.0	13.0
EMWK3414B	3414	1.2 x 3.0	POA						
EMWK3428B	3428	1.2 x 3.0	POA	120	34	10.4	6.0	28.0	19.0
EMWK4514B1.23.0	4514	1.2 x 3.0	POA	135	45	8.0	5.0	14.0	15.0

Expamet Steel Gridwalk (WK) - Galvanised									
Product Code	Mesh Reference	Sheet Sizes	\$/M <sup>2</sup>	Nominal Size of Mesh		Approximate Strand Size		Weight Kg/M <sup>2</sup>	Overall Height
		LW x SW		LWM	SWM	Width	Thick		
EMWK2517G	2517	1.2 x 3.0	POA	60	25	5.6	5.0	17.0	11.0
EMWK3022	3022	1.2 x 3.0	POA	75	30	7.8	5.0	22.0	13.0
EMWK3028G	3028	1.2 x 3.0	POA	75	30	10.7	5.0	28.0	15.0
EMWK3414G.6x3M	3414	.6 x 3.0	POA	120	34	6.4	5.0	14.0	13.0
EMWK3414G.75x3M	3414	.75 x 3.0	POA						
EMWK3414G.9x3M	3414	.9 x 3.0	POA						
EMWK3414G	3414	1.2 x 3.0	POA						
EMWK4514G.75x3.0	4514	.75 x 3.0	POA	135	45	8.0	5.0	14.0	15.0

Expamet Steel Gridwalk - Black									
Product Code	Mesh Reference	Sheet Sizes	\$/M <sup>2</sup>	Nominal Size of Mesh		Approximate Strand Size		Weight Kg/M <sup>2</sup>	Overall Height
		LW x SW		LWM	SWM	Width	Thick		
EMGRIP14B.6x3M	14 *	0.6 x 3.0	POA	120	34	6.4	5.0	14.0	12.5
EMGRIP14B.9x3M	14	0.9 x 3.0	POA						
EMGRIP14B1.23.0	14	1.2 x 3.0	POA						
EMGRIP19B1.23.0	19	1.2 x 3.0	POA	120	34	8.4	5.0	19.0	15.5

Expamet Steel Gridwalk - Galvanised									
Product Code	Mesh Reference	Sheet Sizes	\$/M <sup>2</sup>	Nominal Size of Mesh		Approximate Strand Size		Weight Kg/M <sup>2</sup>	Overall Height
		LW x SW		LWM	SWM	Width	Thick		
EMGRIP14G.6x3M	14	0.6 x 3.0	POA	120	34	6.4	5.0	14.0	12.5
EMGRIP14G.9x3M	14	0.9 x 3.0	POA						
EMGRIP14G1.23.0	14	1.2 x 3.0	POA						

Large Steel Mesh - Mill									
Product Code	Mesh Reference	Sheet Sizes	\$/M <sup>2</sup>	Nominal Size of Mesh		Approximate Strand Size		Weight Kg/M <sup>2</sup>	% Open Overall Height
		LW x SW		LWM	SWM	Width	Thick		
EM07-08B	07-08	1.2 x 1.2	POA	19	7	1.0	0.8	1.8	75-80
EM07-10B	07-10	1.2 x 2.4	POA	19	7	1.7	1.0	3.7	60-73
EM09-10B	09-10	2.4 x 1.2	POA	28	9	1.5	1.0	2.7	75-89
EM09-16B	09-16	2.4 x 1.2	POA	28	9	1.6	1.6	4.4	48-56
EM09-16L	09-16 L	2.4 x 1.2	POA	28	9	2.2	1.6	6.2	48-56
EM12-09B	12-09	2.4 x 1.2	POA	30	12	1.5	1.0	1.9	81-87
EM12-12B	12-12	2.4 x 1.2	POA	30	12	2.2	1.2	3.3	68-78
EM12-16B	12-16	2.4 x 1.2	POA	30	12	2.2	1.6	4.4	67-75
EM12-20B	12-20	2.4 x 1.2	POA	30	12	2.2	2.0	5.5	64-71
EM15-10B	15-10	2.4 x 1.2	POA	38	15	2.0	1.0	1.8	68-74
EM15-16B	15-16	2.4 x 1.2	POA	38	15	2.0	1.6	3.3	68-78
EM15-20B	15-20	2.4 x 1.2	POA	38	15	2.7	2.0	5.1	68-74
EM19-16B	19-16	2.4 x 1.2	POA	50	19	2.1	1.6	2.3	81-87
EM19-20B	19-20	2.4 x 1.2	POA	50	19	2.7	2.0	3.8	77-81

Product Code	Mesh Reference	Sheet Sizes LW x SW	\$/M <sup>2</sup>	Nominal Size of Mesh		Approximate Strand Size		Weight Kg/M <sup>2</sup>	% Open Overall Height
				LWM	SWM	Width	Thick		
EM19-30B	19-30	2.4 x 1.2	POA	50	19	3.9	3.0	8.3	67-74
EM25-16B	25-16	2.4 x 1.2	POA	60	25	2.2	1.6	2.2	82-87
EM25-20B	25-20	2.4 x 1.2	POA	60	25	2.8	2.0	3.5	
EM38-20B	38-20	2.4 x 1.2	POA	76	38	2.9	2.0	2.7	81-84
EM38-30B	38-30	2.4 x 1.2	POA	76	38	3.5	3.0	5.0	76-81
EM50-20B	50-20	2.4 x 1.2	POA	102	50	4.0	2.0	2.5	82-87
EM50-30B	50-30	2.4 x 1.2	POA	102	50	5.6	3.0	5.7	76-83
EM100-30B	100-30	2.4 x 1.2	POA	200	100	6.0	3.0	3.7	
EM100-50B	100-50	2.4 x 1.2	POA	200	100	5.0	5.0	5.2	
Large Steel Mesh - Galvanised									
EM07-08G	07-08	1.2 x 1.2	POA	19	7	1.0	0.8	1.8	75-80
EM07-10G	07-10	1.2 x 2.4	POA	19	7	1.7	1.0	3.7	60-73
EM09-10G	09-10	2.4 x 1.2	POA	28	9	1.5	1.0	2.7	75-89
EM09-16LG	09-16	2.4 x 1.2	POA	28	9	1.6	1.6	4.4	48-56
EM12-09G	12-09	2.4 x 1.2	POA	28	9	2.2	1.6	6.2	48-56
EM12-12G	12-12	2.4 x 1.2	POA	30	12	1.5	1.0	1.9	81-87
EM12-16/FG	12-16	2.4 x 1.2	POA	30	12	2.2	1.2	3.3	68-78
EM12-16G	12-16	2.4 x 1.2	POA	30	12	2.2	1.6	4.4	67-75
EM12-20G	12-20	2.4 x 1.2	POA	30	12	2.2	2.0	5.5	64-71
EM15-10G	15-10	2.4 x 1.2	POA	38	15	2.0	1.0	1.8	68-74
EM15-16G	15-16	2.4 x 1.2	POA	38	15	2.0	1.6	3.3	68-78
EM15-20G	15-20	2.4 x 1.2	POA	38	15	2.7	2.0	5.1	68-74
EM19-16G	19-16	2.4 x 1.2	POA	50	19	2.1	1.6	2.3	81-87
EM19-20G	19-20	2.4 x 1.2	POA	50	19	2.7	2.0	3.8	77-81
EM19-30G	19-30	2.4 x 1.2	POA	50	19	3.9	3.0	8.3	67-74
EM25-16G	25-16	2.4 x 1.2	POA	60	25	2.2	1.6	2.2	82-87
EM25-20G	25-20	2.4 x 1.2	POA	60	25	2.8	2.0	3.5	
EM38-20G	38-20	2.4 x 1.2	POA	76	38	2.9	2.0	2.7	81-84
EM38-30G	38-30	2.4 x 1.2	POA	76	38	3.5	3.0	5.0	76-81
EM50-20G	50-20	2.4 x 1.2	POA	102	50	4.0	2.0	2.5	82-87
EM50-30G	50-30	2.4 x 1.2	POA	102	50	5.6	3.0	5.7	76-83
EM100-30G	100-30	2.4 x 1.2	POA	200	100	6.0	3.0	3.7	
EM100-50G	100-50	2.4 x 1.2	POA	200	100	5.0	5.0	5.2	

Raised Small Steel Mesh - Black									
Product Code	Mesh Reference	Sheet Sizes LW x SW	\$/M <sup>2</sup>	Nominal Size of Mesh		Approximate Strand Size		Weight Kg/M <sup>2</sup>	% Open Area Raised
				LWM	SWM	Width	Thick		
EM198	198	1200 x 1200	POA	15.0	5.5	1.35	0.50	1.88	
EM199	199	1200 x 1200	POA	15.0	5.5	1.17	0.90	3.00	54-65
EM202	202	1200 x 900	POA	10.0	5.5	1.20	0.60	2.00	
EM203	203	1200 x 900	POA	10.0	5.5	0.79	0.60	1.31	66-71
EM206	206	1200 x 1200	POA	10.0	5.5	1.17	0.70	2.43	60-68
EM207	207	1200 x 900	POA	10.0	5.5	1.55	0.70	3.22	46-61
EM209	209	1200 x 900	POA	10.0	5.5	1.55	0.90	4.10	40-54
EM213	213	1200 x 1200	POA	3.2	2.0	0.76	0.30	1.86	16-26
EM220	220	1200 x 900	POA	6.0	3.5	0.60	0.50	1.39	
EM225	225	1200 x 900	POA	6.0	3.5	0.79	0.30	1.10	58-71
EM902	902	600 x 1000	POA						

Flat Small Steel Mesh - Black									
Product Code	Mesh Reference	Sheet Sizes LW x SW	\$/M <sup>2</sup>	Nominal Size of Mesh		Approximate Strand Size		Weight Kg/M <sup>2</sup>	% Open Area Flat
				LWM	SWM	Width	Thick		
EM217F	217	1200 x 2400	POA	10.0	6.0	1.14	0.90	3.00	52



Super Mesh (One-Way Restricted Mesh)									
Product Code	Mesh Reference	Sheet Sizes	\$/M <sup>2</sup>	Nominal Size of Mesh		Approximate Strand Size		Weight Kg/M <sup>2</sup>	% Open Area Flat
		LW x SW		LWM	SWM	Width	Thick		
EM602DVA	602DVA	825 x 2000	POA	5.8	3.3	1.17	0.50	1.00	23-56

**Building Products**

Balustrading and Security Screening									
Product Code	Mesh Reference	Sheet Sizes	\$/M <sup>2</sup>	Nominal Size of Mesh		Approximate Strand Size		Weight Kg/M <sup>2</sup>	Overall Height
		LW x SW		LWM	SWM	Width	Thick		
EMWENTWORTH30B	Wentworth 30 - Black	2.4 x 1.2	POA	200	26	3.2	3.0	5.72	79-95
EMWENTWORTH30G	Wentworth 30 - Gal	2.4 x 1.2	POA	200	26	3.2	3.0	5.72	79-95

Sunscreen									
Product Code	Mesh Reference	Sheet Sizes	\$/M <sup>2</sup>	Nominal Size of Mesh		Approximate Strand Size		Weight Kg/M <sup>2</sup>	Overall Height
		LW x SW		LWM	SWM	Width	Thick		
EMLV10G	LV10G Louvre	1.2 x 2.4	*	62	14.3	4.80	0.95	5.2	37-88

Gripspan Grating - Diamond Tread - Plain (PI) - Serrated (SR)							
Product Code	Size	Price per Lineal Metre	Plank Width (mm)	Plank Height	Weight per Metre	Material Thickness (mm)	
EMGRIPSPAN6520G	6520 x 300	POA	225	65	6.40	2.0	

